

Recombinant Mouse Sirt2 Protein, His-tagged

Cat. No. Sirt2-648M **Lot. No.** (See product label)

SPECIFICATION

Product Overview	Recombinant Mouse Sirt2(Glu65~Glu340) fused with His tag at N-terminal was expressed in E. coli.
Species	Mouse
Source	E.coli
ProteinLength	Glu65~Glu340
Description	Sirt2 played an important role in many functions.
Form	PBS, pH7.4, containing 0.01% SKL, 1mM DTT, 5% Trehalose and Proclin300.
Molecular Mass	35.0kDa
Identity	Reconstitute in PBS or others
Endotoxin	<1.0EU per 1g (determined by the LAL method)
Purity	> 95%
Applications	Positive Control; Immunogen; SDS-PAGE; WB. If bio-activity of the protein is needed, please check active protein
Stability	The thermal stability is described by the loss rate. The loss rate was determined by

 Tel: 1-631-559-9269 1-516-512-3133

 Email: info@creative-biomart.com  Fax: 1-631-938-8127

 45-1 Ramsey Road, Shirley, NY 11967, USA

accelerated thermal degradation test, that is, incubate the protein at 37 centigrade for 48h, and no obvious degradation and precipitation were observed. The loss rate is less than 5% within the expiration date under appropriate storage condition.

Storage

Avoid repeated freeze/thaw cycles. Store at 2-8 centigrade for one month. Aliquot and store at -80 centigrade for 12 months.

Reconstitution

Reconstitute in PBS or others

GENE INFORMATION

Gene Name

Sirt2 sirtuin 2 (silent mating type information regulation 2, homolog) 2 (*S. cerevisiae*) [*Mus musculus*]

Official Symbol

Sirt2

Synonyms

SIRT2; sirtuin 2 (silent mating type information regulation 2, homolog) 2 (*S. cerevisiae*); NAD-dependent deacetylase sirtuin-2; mSIR2L2; SIR2-like protein 2; silent mating type information regulation 2, (*S.cerevisiae*, homolog)-like; sirtuin 2; Sir2I; SIR2L2; 5730427M03Rik;

Gene ID

64383

mRNA Refseq

NM_001122765

Protein Refseq

NP_001116237

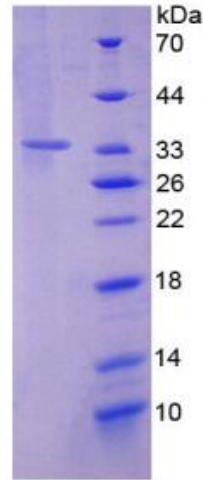
UniProt ID

Q8VDQ8

 Tel: 1-631-559-9269 1-516-512-3133

 Email: info@creative-biomart.com  Fax: 1-631-938-8127

 45-1 Ramsey Road, Shirley, NY 11967, USA



15% SDS-PAGE

Tel: 1-631-559-9269 1-516-512-3133

Email: info@creative-biomart.com Fax: 1-631-938-8127

45-1 Ramsey Road, Shirley, NY 11967, USA