

## Recombinant Rat Sit1 Protein, His-tagged

**Cat. No.** Sit1-1230R    **Lot. No.** (See product label)

### SPECIFICATION

<b>Product Overview</b>	Recombinant Rat Sit1 Protein (Ser45-Ser178) with His tag was expressed in 293F.
<b>Species</b>	Rat
<b>Source</b>	HEK293
<b>ProteinLength</b>	Ser45-Ser178
<b>Description</b>	Predicted to enable kinase binding activity. Predicted to be involved in regulation of T cell activation. Predicted to be integral component of membrane. Predicted to be active in plasma membrane. Orthologous to human SIT1 (signaling threshold regulating transmembrane adaptor 1).
<b>Form</b>	Freeze-dried powder
<b>Molecular Mass</b>	Predicted Molecular Mass: 16.2 kDa; Accurate Molecular Mass: 18 kDa
<b>Purity</b>	> 90%
<b>Applications</b>	Positive Control; Immunogen; SDS-PAGE; WB.
<b>Stability</b>	The thermal stability is described by the loss rate. The loss rate was determined by accelerated thermal degradation test, that is, incubate the protein at 37 centigrade for 48h, and no obvious degradation and precipitation were observed. The loss rate is less than 5% within the expiration date under appropriate storage condition.

 Tel: 1-631-559-9269    1-516-512-3133

 Email: [info@creative-biomart.com](mailto:info@creative-biomart.com)     Fax: 1-631-938-8127

 45-1 Ramsey Road, Shirley, NY 11967, USA

<b>Storage</b>	Avoid repeated freeze/thaw cycles. Store at 2-8 centigrade for one month. Aliquot and store at -80 centigrade for 12 months.
<b>Storage Buffer</b>	20mM Tris, 150mM NaCl, pH8.0, containing 1mM EDTA, 1mM DTT, 0.01% SKL, 5% Trehalose and Proclin300.
<b>Reconstitution</b>	Reconstitute in 20mM Tris, 150mM NaCl (pH8.0) to a concentration of 0.1-1.0 mg/mL. Do not vortex.

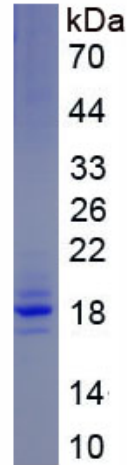
## GENE INFORMATION

<b>Gene Name</b>	Sit1 signaling threshold regulating transmembrane adaptor 1 [ <i>Rattus norvegicus</i> (Norway rat) ]
<b>Official Symbol</b>	Sit1
<b>Synonyms</b>	SIT1; signaling threshold regulating transmembrane adaptor 1; signaling threshold-regulating transmembrane adapter 1; suppression inducing transmembrane adaptor 1; suppression-inducing transmembrane adapter 1; SHP2-interacting transmembrane adapter protein;
<b>Gene ID</b>	500449
<b>mRNA Refseq</b>	NM_001024344
<b>Protein Refseq</b>	NP_001019515
<b>UniProt ID</b>	Q5M869

 Tel: 1-631-559-9269 1-516-512-3133

 Email: [info@creative-biomart.com](mailto:info@creative-biomart.com)  Fax: 1-631-938-8127

 45-1 Ramsey Road, Shirley, NY 11967, USA



Tel: 1-631-559-9269 1-516-512-3133

Email: [info@creative-biomart.com](mailto:info@creative-biomart.com) Fax: 1-631-938-8127

45-1 Ramsey Road, Shirley, NY 11967, USA