

Recombinant Mouse Slamf6 Protein (Glu31-Asn239), N-His tagged

Cat. No. Slamf6-6808M Lot. No. (See product label)

SPECIFICATION

| | |
|-------------------------|---|
| Product Overview | Recombinant mouse SLAMF6 (Glu31-Asn239) fused with the N-terminal His tag was expressed in mammalian cells. |
| Species | Mouse |
| Source | Mammalian Cells |
| ProteinLength | Glu31-Asn239 |
| Description | Involved in natural killer cell differentiation and natural killer cell proliferation. Predicted to be located in plasma membrane. Predicted to be integral component of plasma membrane. Predicted to be active in external side of plasma membrane. Orthologous to human SLAMF6 (SLAM family member 6). |
| Form | Lyophilized powder/frozen liquid |
| Molecular Mass | 22.99 kDa |
| Purity | > 90 % as determined by SDS-PAGE |
| Notes | For research use only. |
| Storage | Use a manual defrost freezer and avoid repeated freeze thaw cycles. Store at 2 to 8 centigrade for one week. Store at -20 to -80 centigrade for twelve months from the |

 Tel: 1-631-559-9269 1-516-512-3133

 Email: info@creative-biomart.com  Fax: 1-631-938-8127

 45-1 Ramsey Road, Shirley, NY 11967, USA

date of receipt.

Storage Buffer Supplied as solution form in PBS or lyophilized from PBS.

Reconstitution Reconstitute in sterile water for a stock solution.

Shipping They are shipped out with dry ice/blue ice unless customers require otherwise.

GENE INFORMATION

Gene Name Slamf6 SLAM family member 6 [*Mus musculus* (house mouse)]

Official Symbol [Slamf6](#)

Synonyms SLAMF6; SLAM family member 6; CD352; KALI; KAL1b; Ly108; NTB A; NTBA; SF2000; NTBA receptor; NK-T-B-antigen; activating NK receptor; natural killer-, T- and B-cell antigen; NTB-A; FLJ50657; MGC104953;

Gene ID [30925](#)

mRNA Refseq [NM_001347186](#)

Protein Refseq [NP_001334115](#)

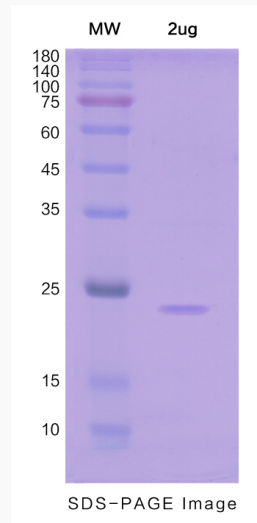
UniProt ID [Q9ET39](#)

 Tel: 1-631-559-9269 1-516-512-3133

 Email: info@creative-biomart.com  Fax: 1-631-938-8127

 45-1 Ramsey Road, Shirley, NY 11967, USA

SDS-PAGE



 Tel: 1-631-559-9269 1-516-512-3133

 Email: info@creative-biomart.com  Fax: 1-631-938-8127

 45-1 Ramsey Road, Shirley, NY 11967, USA