

Recombinant Human Slamf8 Protein (Ala23-Asp233), C-His tagged

Cat. No. Slamf8-1595H Lot. No. (See product label)

SPECIFICATION

Product Overview	Recombinant human Slamf8 (Ala23-Asp233) fused with the C-terminal His tag was expressed in Mammalian cells.
Species	Human
Source	Mammalian Cells
ProteinLength	Ala23-Asp233
Form	Lyophilized powder/frozen liquid
Molecular Mass	28.16 kDa
Purity	>90% as determined by SDS-PAGE.
Notes	For research use only.
Storage	Use a manual defrost freezer and avoid repeated freeze thaw cycles. Store at 2 to 8 centigrade for one week. Store at -20 to -80 centigrade for twelve months from the date of receipt.
Storage Buffer	Supplied as solution form in PBS or lyophilized from PBS.
Reconstitution	Reconstitute in sterile water for a stock solution.

 Tel: 1-631-559-9269 1-516-512-3133

 Email: info@creative-biomart.com  Fax: 1-631-938-8127

 45-1 Ramsey Road, Shirley, NY 11967, USA

Shipping They are shipped out with dry ice/blue ice unless customers require otherwise.

GENE INFORMATION

Gene Name SLAMF8 SLAM family member 8 [Homo sapiens (human)]

Official Symbol Slamf8

Synonyms SLAMF8; SLAM family member 8; BLAME; CD353; SBBI42; BCM-like membrane protein; B lymphocyte activator macrophage expressed; B-lymphocyte activator macrophage expressed; FLJ20442; MGC129578;

Gene ID 56833

mRNA Refseq NM_020125

Protein Refseq NP_064510

MIM 606620

UniProt ID Q9P0V8

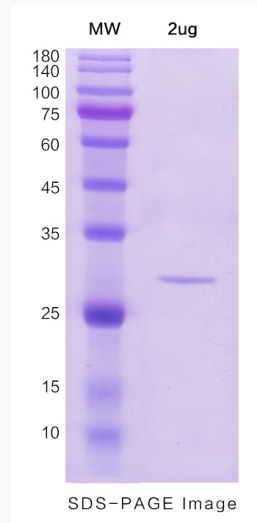
 Tel: 1-631-559-9269 1-516-512-3133

 Email: info@creative-biomart.com  Fax: 1-631-938-8127

 45-1 Ramsey Road, Shirley, NY 11967, USA



SDS-PAGE



Tel: 1-631-559-9269 1-516-512-3133

Email: info@creative-biomart.com Fax: 1-631-938-8127

45-1 Ramsey Road, Shirley, NY 11967, USA