

Recombinant Mouse Slamf9 Protein (Phe18-Leu230), C-His tagged

Cat. No. Slamf9-6809M **Lot. No.** (See product label)

SPECIFICATION

Product Overview	Recombinant mouse SLAMF9 (Phe18-Leu230) fused with the C-terminal His tag was expressed in mammalian cells.
Species	Mouse
Source	Mammalian Cells
ProteinLength	Phe18-Leu230
Description	Acts upstream of or within defense response to bacterium; plasmacytoid dendritic cell chemotaxis; and plasmacytoid dendritic cell differentiation. Located in cell surface. Is expressed in heart ventricle; lung; and pituitary gland. Orthologous to human SLAMF9 (SLAM family member 9).
Form	Lyophilized powder/frozen liquid
Molecular Mass	23.43 kDa
Purity	> 90 % as determined by SDS-PAGE
Notes	For research use only.
Storage	Use a manual defrost freezer and avoid repeated freeze thaw cycles. Store at 2 to 8 centigrade for one week. Store at -20 to -80 centigrade for twelve months from the

 Tel: 1-631-559-9269 1-516-512-3133

 Email: info@creative-biomart.com  Fax: 1-631-938-8127

 45-1 Ramsey Road, Shirley, NY 11967, USA

date of receipt.

Storage Buffer

Supplied as solution form in PBS or lyophilized from PBS.

Reconstitution

Reconstitute in sterile water for a stock solution.

Shipping

They are shipped out with dry ice/blue ice unless customers require otherwise.

GENE INFORMATION

Gene Name

Slamf9 SLAM family member 9 [*Mus musculus* (house mouse)]

Official Symbol

Slamf9

Synonyms

Slamf9; SLAM family member 9; Cd2f10; SF2001; CD2F-10; CD84-H1; 2310026I04Rik; SLAM family member 9; CD2 antigen family, member 10

Gene ID

98365

mRNA Refseq


NM_029612

Protein Refseq

NP_083888

UniProt ID

Q9D780

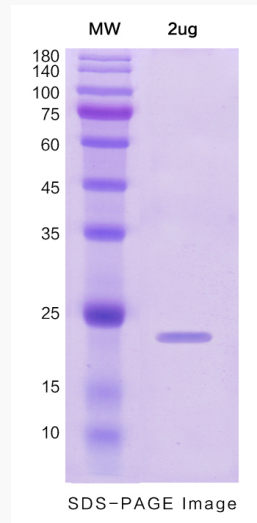
 Tel: 1-631-559-9269 1-516-512-3133

 Email: info@creative-biomart.com  Fax: 1-631-938-8127

 45-1 Ramsey Road, Shirley, NY 11967, USA



SDS-PAGE



Tel: 1-631-559-9269 1-516-512-3133

Email: info@creative-biomart.com Fax: 1-631-938-8127

45-1 Ramsey Road, Shirley, NY 11967, USA