

## Recombinant Rat Slc17a6 protein, His-tagged

**Cat. No.** Slc17a6-3654R    **Lot. No.** (See product label)

### SPECIFICATION

<b>Product Overview</b>	Recombinant Rat Slc17a6 protein(Q9JI12)(499-582aa), fused with C-terminal His tag, was expressed in Yeast.
<b>Species</b>	Rat
<b>Source</b>	Yeast
<b>ProteinLength</b>	499-582aa
<b>Tag</b>	C-His
<b>Form</b>	If the delivery form is liquid, the default storage buffer is Tris/PBS-based buffer, 5%-50% glycerol. If the delivery form is lyophilized powder, the buffer before lyophilization is Tris/PBS-based buffer, 6% Trehalose, pH 8.0.
<b>Molecular Mass</b>	11.1 kDa
<b>Purity</b>	Greater than 85% as determined by SDS-PAGE.
<b>Storage</b>	Store at -20°C/-80°C upon receipt, aliquoting is necessary for mutiple use. Avoid repeated freeze-thaw cycles.
<b>Reconstitution</b>	We recommend that this vial be briefly centrifuged prior to opening to bring the contents to the bottom. Please reconstitute protein in deionized sterile water to a concentration of 0.1-1.0 mg/mL. We recommend to add 5-50% of glycerol (final

 Tel: 1-631-559-9269    1-516-512-3133

 Email: [info@creative-biomart.com](mailto:info@creative-biomart.com)     Fax: 1-631-938-8127

 45-1 Ramsey Road, Shirley, NY 11967, USA

concentration) and aliquot for long-term storage at -20°C/-80°C.

**AA Sequence**

SGEKQPWADPEETSEEKCGFIHEDELDEETGDITQNYINYGTTKSYGATSQENGGW  
PNGWEKKEEFVQESAQDAYSYKDRDDYS

## GENE INFORMATION

**Gene Name**

*Slc17a6* solute carrier family 17 (sodium-dependent inorganic phosphate cotransporter), member 6 [ *Rattus norvegicus* ]

**Official Symbol**

*Slc17a6*

**Synonyms**

SLC17A6; solute carrier family 17 (sodium-dependent inorganic phosphate cotransporter), member 6; vesicular glutamate transporter 2; differentiation-associated BNPI; solute carrier family 17 member 6; differentiation-associated Na-dependent inorganic phosphate cotransporter; differentiation-associated Na(+)-dependent inorganic phosphate cotransporter; Dnpi; Vglut2;

**Gene ID**

84487

**mRNA Refseq**

NM\_053427

**Protein Refseq**

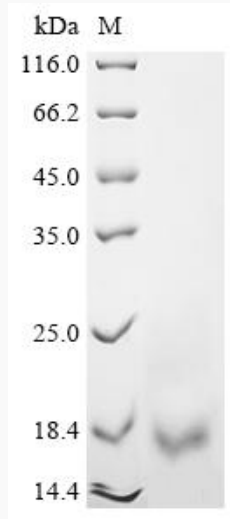
NP\_445879

 Tel: 1-631-559-9269 1-516-512-3133

 Email: [info@creative-biomart.com](mailto:info@creative-biomart.com)  Fax: 1-631-938-8127

 45-1 Ramsey Road, Shirley, NY 11967, USA

**SDS-PAGE**



 Tel: 1-631-559-9269 1-516-512-3133

 Email: [info@creative-biomart.com](mailto:info@creative-biomart.com)  Fax: 1-631-938-8127

 45-1 Ramsey Road, Shirley, NY 11967, USA