

Recombinant Rat Slc17a6 protein, His&Myc-tagged

Cat. No. Slc17a6-755R Lot. No. (See product label)

SPECIFICATION

Product Overview	Recombinant Rat Slc17a6 protein(Q9JI12)(499-582aa), fused with N-terminal His tag and C-terminal Myc tag, was expressed in E.coli.
Species	Rat
Source	E.coli
ProteinLength	499-582aa
Form	If the delivery form is liquid, the default storage buffer is Tris/PBS-based buffer, 5%-50% glycerol. If the delivery form is lyophilized powder, the buffer before lyophilization is Tris/PBS-based buffer, 6% Trehalose, pH 8.0.
Molecular Mass	17.1 kDa
Purity	Greater than 90% as determined by SDS-PAGE.
Storage	Store at -20°C/-80°C upon receipt, aliquoting is necessary for mutiple use. Avoid repeated freeze-thaw cycles.
Reconstitution	We recommend that this vial be briefly centrifuged prior to opening to bring the contents to the bottom. Please reconstitute protein in deionized sterile water to a concentration of 0.1-1.0 mg/mL. We recommend to add 5-50% of glycerol (final concentration) and aliquot for long-term storage at -20°C/-80°C.

 Tel: 1-631-559-9269 1-516-512-3133

 Email: info@creative-biomart.com  Fax: 1-631-938-8127

 45-1 Ramsey Road, Shirley, NY 11967, USA

AA Sequence SGEKQPWADPEETSEEKCGFIHEDELDEETGDITQNYINYGTTKSYGATSQENGGW
PNGWEKKEEFVQESAQDAYSYKDRDDYS

GENE INFORMATION

Gene Name Slc17a6 solute carrier family 17 (sodium-dependent inorganic phosphate cotransporter), member 6 [*Rattus norvegicus*]

Official Symbol [Slc17a6](#)

Synonyms SLC17A6; solute carrier family 17 (sodium-dependent inorganic phosphate cotransporter), member 6; vesicular glutamate transporter 2; differentiation-associated BNPI; solute carrier family 17 member 6; differentiation-associated Na-dependent inorganic phosphate cotransporter; differentiation-associated Na(+)-dependent inorganic phosphate cotransporter; Dnpi; Vglut2;

Gene ID [84487](#)

mRNA Refseq [NM_053427](#)

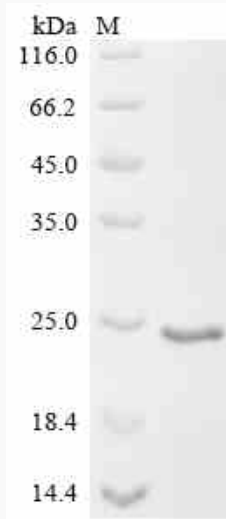
Protein Refseq [NP_445879](#)

 Tel: 1-631-559-9269 1-516-512-3133

 Email: info@creative-biomart.com  Fax: 1-631-938-8127

 45-1 Ramsey Road, Shirley, NY 11967, USA

SDS-PAGE



 Tel: 1-631-559-9269 1-516-512-3133

 Email: info@creative-biomart.com  Fax: 1-631-938-8127

 45-1 Ramsey Road, Shirley, NY 11967, USA