

Recombinant Rat Slc17a7 protein, His-tagged

Cat. No. Slc17a7-4543R Lot. No. (See product label)

SPECIFICATION

Product Overview	Recombinant Rat Slc17a7 protein(Q62634)(1-63aa), fused with C-terminal His tag, was expressed in Yeast.
Species	Rat
Source	Yeast
ProteinLength	1-63aa
Tag	C-His
Form	If the delivery form is liquid, the default storage buffer is Tris/PBS-based buffer, 5%-50% glycerol. If the delivery form is lyophilized powder, the buffer before lyophilization is Tris/PBS-based buffer, 6% Trehalose, pH 8.0.
Molecular Mass	8.8 kDa
Purity	Greater than 85% as determined by SDS-PAGE.
Storage	Store at -20°C/-80°C upon receipt, aliquoting is necessary for mutiple use. Avoid repeated freeze-thaw cycles.
Reconstitution	We recommend that this vial be briefly centrifuged prior to opening to bring the contents to the bottom. Please reconstitute protein in deionized sterile water to a concentration of 0.1-1.0 mg/mL. We recommend to add 5-50% of glycerol (final

 Tel: 1-631-559-9269 1-516-512-3133

 Email: info@creative-biomart.com  Fax: 1-631-938-8127

 45-1 Ramsey Road, Shirley, NY 11967, USA

concentration) and aliquot for long-term storage at -20°C/-80°C.

AA Sequence

MEFRQEEFRKLAGRALGRLHRLLEKRQEGAETLELSADGRPVTTHTRDPPVVDCTC
FGLPRRY

GENE INFORMATION

Gene Name

Slc17a7 solute carrier family 17 (sodium-dependent inorganic phosphate cotransporter), member 7 [*Rattus norvegicus*]

Official Symbol

Slc17a7

Synonyms

SLC17A7; solute carrier family 17 (sodium-dependent inorganic phosphate cotransporter), member 7; vesicular glutamate transporter 1; solute carrier family 17 member 7; brain-specific Na-dependent inorganic phosphate cotransporter; brain-specific Na(+)-dependent inorganic phosphate cotransporter; BNPI; Vglut1;

Gene ID

116638

mRNA Refseq

NM_053859

Protein Refseq

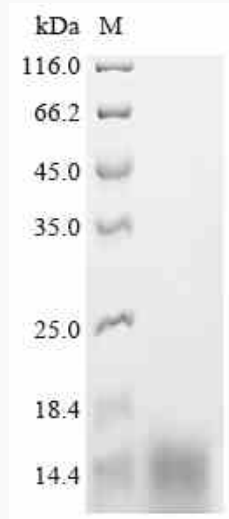
NP_446311

 Tel: 1-631-559-9269 1-516-512-3133

 Email: info@creative-biomart.com  Fax: 1-631-938-8127

 45-1 Ramsey Road, Shirley, NY 11967, USA

SDS-PAGE



 Tel: 1-631-559-9269 1-516-512-3133

 Email: info@creative-biomart.com  Fax: 1-631-938-8127

 45-1 Ramsey Road, Shirley, NY 11967, USA