

## Recombinant Rat Slc17a8 protein, His-tagged

Cat. No. Slc17a8-4633R Lot. No. (See product label)

### SPECIFICATION

<b>Product Overview</b>	Recombinant Rat Slc17a8 protein(Q7TSF2)(1-76aa), fused with C-terminal His tag, was expressed in Yeast.
<b>Species</b>	Rat
<b>Source</b>	Yeast
<b>ProteinLength</b>	1-76aa
<b>Tag</b>	C-His
<b>Form</b>	If the delivery form is liquid, the default storage buffer is Tris/PBS-based buffer, 5%-50% glycerol. If the delivery form is lyophilized powder, the buffer before lyophilization is Tris/PBS-based buffer, 6% Trehalose, pH 8.0.
<b>Molecular Mass</b>	9.8 kDa
<b>Purity</b>	Greater than 90% as determined by SDS-PAGE.
<b>Storage</b>	Store at -20°C/-80°C upon receipt, aliquoting is necessary for mutiple use. Avoid repeated freeze-thaw cycles.
<b>Reconstitution</b>	We recommend that this vial be briefly centrifuged prior to opening to bring the contents to the bottom. Please reconstitute protein in deionized sterile water to a concentration of 0.1-1.0 mg/mL. We recommend to add 5-50% of glycerol (final

 Tel: 1-631-559-9269 1-516-512-3133

 Email: [info@creative-biomart.com](mailto:info@creative-biomart.com)  Fax: 1-631-938-8127

 45-1 Ramsey Road, Shirley, NY 11967, USA

concentration) and aliquot for long-term storage at -20°C/-80°C.

**AA Sequence**

MPFNAFDTFKEKILKPGKEGVKNAVGDSLILQRKLDGTNEEGDAIELSEEGRPVQT  
SRARAPVCDSCCGIPKRY

**GENE INFORMATION****Gene Name**

Slc17a8 solute carrier family 17 (sodium-dependent inorganic phosphate cotransporter), member 8 [ *Rattus norvegicus* ]

**Official Symbol**

Slc17a8

**Synonyms**

SLC17A8; solute carrier family 17 (sodium-dependent inorganic phosphate cotransporter), member 8; vesicular glutamate transporter 3; solute carrier family 17 member 8; Vglut3;

**Gene ID**

266767

**mRNA Refseq**

NM\_153725

**Protein Refseq**

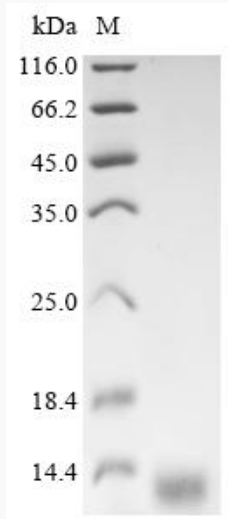
NP\_714947

 Tel: 1-631-559-9269 1-516-512-3133

 Email: [info@creative-biomart.com](mailto:info@creative-biomart.com)  Fax: 1-631-938-8127

 45-1 Ramsey Road, Shirley, NY 11967, USA

**SDS-PAGE**



 Tel: 1-631-559-9269 1-516-512-3133

 Email: [info@creative-biomart.com](mailto:info@creative-biomart.com)  Fax: 1-631-938-8127

 45-1 Ramsey Road, Shirley, NY 11967, USA