

Recombinant Rat Slc17a8 protein, His-tagged

Cat. No. Slc17a8-754R Lot. No. (See product label)

SPECIFICATION

Product Overview	Recombinant Rat Slc17a8 protein(Q7TSF2)(1-76aa), fused with C-terminal His tag, was expressed in E.coli.
Species	Rat
Source	E.coli
ProteinLength	1-76aa
Form	If the delivery form is liquid, the default storage buffer is Tris/PBS-based buffer, 5%-50% glycerol. If the delivery form is lyophilized powder, the buffer before lyophilization is Tris/PBS-based buffer, 6% Trehalose, pH 8.0.
Molecular Mass	15.2 kDa
Purity	Greater than 90% as determined by SDS-PAGE.
Storage	Store at -20°C/-80°C upon receipt, aliquoting is necessary for mutiple use. Avoid repeated freeze-thaw cycles.
Reconstitution	We recommend that this vial be briefly centrifuged prior to opening to bring the contents to the bottom. Please reconstitute protein in deionized sterile water to a concentration of 0.1-1.0 mg/mL. We recommend to add 5-50% of glycerol (final concentration) and aliquot for long-term storage at -20°C/-80°C.

 Tel: 1-631-559-9269 1-516-512-3133

 Email: info@creative-biomart.com  Fax: 1-631-938-8127

 45-1 Ramsey Road, Shirley, NY 11967, USA

AA Sequence MPFNAFDTFKEKILKPGKEGVKNAVGDSLGLQRKLDGTNEEGDAIELSEEGRPVQT
SRARAPVCDCCSCGIPKRY

GENE INFORMATION

Gene Name Slc17a8 solute carrier family 17 (sodium-dependent inorganic phosphate cotransporter), member 8 [*Rattus norvegicus*]

Official Symbol [Slc17a8](#)

Synonyms SLC17A8; solute carrier family 17 (sodium-dependent inorganic phosphate cotransporter), member 8; vesicular glutamate transporter 3; solute carrier family 17 member 8; Vglut3;

Gene ID [266767](#)

mRNA Refseq [NM_153725](#)

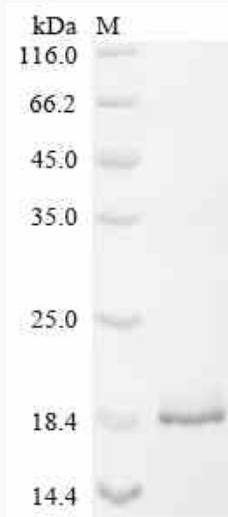
Protein Refseq [NP_714947](#)

 Tel: 1-631-559-9269 1-516-512-3133

 Email: info@creative-biomart.com  Fax: 1-631-938-8127

 45-1 Ramsey Road, Shirley, NY 11967, USA

SDS-PAGE



 Tel: 1-631-559-9269 1-516-512-3133

 Email: info@creative-biomart.com  Fax: 1-631-938-8127

 45-1 Ramsey Road, Shirley, NY 11967, USA