

Recombinant Rat Slc26a4 Protein, His-tagged

Cat. No. Slc26a4-2068R **Lot. No.** (See product label)

SPECIFICATION

Product Overview	Recombinant Rat Slc26a4 Protein (His535-Leu729) with N-His tag was expressed in E. coli.
Species	Rat
Source	E.coli
ProteinLength	His535-Leu729
Description	Enables chloride transmembrane transporter activity and iodide transmembrane transporter activity. Involved in inorganic anion transport. Located in apical plasma membrane. Human ortholog(s) of this gene implicated in Pendred Syndrome; autosomal recessive nonsyndromic deafness 4; and goiter. Orthologous to human SLC26A4 (solute carrier family 26 member 4).
Form	Freeze-dried powder
Molecular Mass	Predicted Molecular Mass: 26.1 kDa Accurate Molecular Mass: 26 kDa
Purity	> 90%
Applications	Positive Control; Immunogen; SDS-PAGE; WB.
Stability	The thermal stability is described by the loss rate. The loss rate was determined by

 Tel: 1-631-559-9269 1-516-512-3133

 Email: info@creative-biomart.com  Fax: 1-631-938-8127

 45-1 Ramsey Road, Shirley, NY 11967, USA



accelerated thermal degradation test, that is, incubate the protein at 37 centigrade for 48h, and no obvious degradation and precipitation were observed. The loss rate is less than 5% within the expiration date under appropriate storage condition.

Storage

Avoid repeated freeze/thaw cycles. Store at 2-8 centigrade for one month. Aliquot and store at -80 centigrade for 12 months.

Storage Buffer

20mM Tris, 150mM NaCl, pH8.0, containing 1mM EDTA, 1mM DTT, 0.01% SKL, 5% Trehalose and Proclin300.

Reconstitution

Reconstitute in 20mM Tris, 150mM NaCl (pH8.0) to a concentration of 0.1-1.0 mg/mL. Do not vortex.

GENE INFORMATION

Gene Name

Slc26a4 solute carrier family 26, member 4 [*Rattus norvegicus* (Norway rat)]

Official Symbol

Slc26a4

Synonyms

SLC26A4; solute carrier family 26, member 4; pendrin; Pendred syndrome homolog; sodium-independent chloride/iodide transporter; Pds;

Gene ID

29440

mRNA Refseq

NM_019214

Protein Refseq

NP_062087

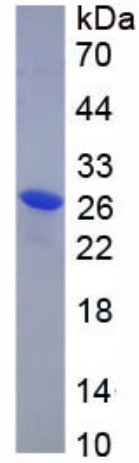
UniProt ID

Q9R154

Tel: 1-631-559-9269 1-516-512-3133

Email: info@creative-biomart.com Fax: 1-631-938-8127

45-1 Ramsey Road, Shirley, NY 11967, USA



 Tel: 1-631-559-9269 1-516-512-3133

 Email: info@creative-biomart.com  Fax: 1-631-938-8127

 45-1 Ramsey Road, Shirley, NY 11967, USA