

Recombinant Rat Slc2a1 Protein, His&SUMO-tagged

Cat. No. Slc2a1-1232R **Lot. No.** (See product label)

SPECIFICATION

Product Overview	Recombinant Rat Slc2a1 Protein (Phe409-Asp489) with His&SUMO tag was expressed in E. coli.
Species	Rat
Source	E.coli
ProteinLength	Phe409-Asp489
Description	Enables several functions, including D-glucose transmembrane transporter activity; dehydroascorbic acid transmembrane transporter activity; and kinase binding activity. Involved in several processes, including cellular hyperosmotic response; cellular response to mechanical stimulus; and dehydroascorbic acid transport. Located in several cellular components, including Z disc; basolateral plasma membrane; and intercalated disc. Colocalizes with sarcolemma. Biomarker of hypertension; hypothyroidism; and middle cerebral artery infarction. Human ortholog(s) of this gene implicated in brain disease (multiple); carbohydrate metabolic disorder; myelomeningocele; obesity; and type 2 diabetes mellitus. Orthologous to human SLC2A1 (solute carrier family 2 member 1).
Form	Freeze-dried powder
Molecular Mass	Predicted Molecular Mass: 22.9 kDa; Accurate Molecular Mass: 20 kDa
Purity	> 95%

 Tel: 1-631-559-9269 1-516-512-3133

 Email: info@creative-biomart.com  Fax: 1-631-938-8127

 45-1 Ramsey Road, Shirley, NY 11967, USA

Applications	Positive Control; Immunogen; SDS-PAGE; WB.
Stability	The thermal stability is described by the loss rate. The loss rate was determined by accelerated thermal degradation test, that is, incubate the protein at 37 centigrade for 48h, and no obvious degradation and precipitation were observed. The loss rate is less than 5% within the expiration date under appropriate storage condition.
Storage	Avoid repeated freeze/thaw cycles. Store at 2-8 centigrade for one month. Aliquot and store at -80 centigrade for 12 months.
Storage Buffer	20mM Tris, 150mM NaCl, pH8.0, containing 1mM EDTA, 1mM DTT, 0.01% SKL, 5% Trehalose and Proclin300.
Reconstitution	Reconstitute in 20mM Tris, 150mM NaCl (pH8.0) to a concentration of 0.1-1.0 mg/mL. Do not vortex.

GENE INFORMATION

Gene Name	Slc2a1 solute carrier family 2 (facilitated glucose transporter), member 1 [Rattus norvegicus (Norway rat)]
Official Symbol	Slc2a1
Synonyms	SLC2A1; solute carrier family 2 (facilitated glucose transporter), member 1; solute carrier family 2, facilitated glucose transporter member 1; GLUT-1; solute carrier family 2, member 1; glucose transporter type 1, erythrocyte/brain; Solute carrier family 2 a 1 (facilitated glucose transporter) brain; GTG1; Gtg3; GLUTB; Glut1; RATGTG1;
Gene ID	24778
mRNA Refseq	NM_138827

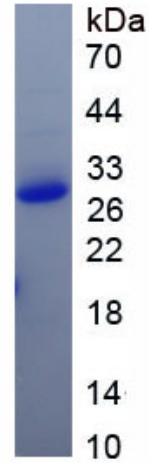
 Tel: 1-631-559-9269 1-516-512-3133

 Email: info@creative-biomart.com  Fax: 1-631-938-8127

 45-1 Ramsey Road, Shirley, NY 11967, USA

Protein Refseq NP_620182

UniProt ID P11167



 Tel: 1-631-559-9269 1-516-512-3133

 Email: info@creative-biomart.com  Fax: 1-631-938-8127

 45-1 Ramsey Road, Shirley, NY 11967, USA