

## Recombinant Mouse Slc2a4 Protein, His&GST-tagged

Cat. No. Slc2a4-2695M Lot. No. (See product label)

### SPECIFICATION

<b>Product Overview</b>	Recombinant Mouse Slc2a4 Protein (Arg228-Val292) with a N-His&GST tag was expressed in E. coli.
<b>Species</b>	Mouse
<b>Source</b>	E.coli
<b>ProteinLength</b>	Arg228-Val292
<b>Description</b>	Enables glucose transmembrane transporter activity. Involved in cellular response to insulin stimulus. Acts upstream of or within several processes, including amylopectin biosynthetic process; brown fat cell differentiation; and glucose import in response to insulin stimulus. Located in several cellular components, including cytoplasmic vesicle; extracellular exosome; and sarcolemma. Is integral component of plasma membrane. Is expressed in several structures, including adipose tissue; adrenal gland; alimentary system; brain; and genitourinary system. Used to study type 2 diabetes mellitus. Human ortholog(s) of this gene implicated in type 2 diabetes mellitus. Orthologous to human SLC2A4 (solute carrier family 2 member 4).
<b>Form</b>	Freeze-dried powder
<b>Molecular Mass</b>	Predicted Molecular Mass: 37.6 kDa Accurate Molecular Mass: 41 kDa
<b>Endotoxin</b>	<1.0 EU per 1g (determined by the LAL method).

 Tel: 1-631-559-9269 1-516-512-3133

 Email: [info@creative-biomart.com](mailto:info@creative-biomart.com)  Fax: 1-631-938-8127

 45-1 Ramsey Road, Shirley, NY 11967, USA

<b>Purity</b>	> 90%
<b>Applications</b>	Positive Control; Immunogen; SDS-PAGE; WB.
<b>Stability</b>	The thermal stability is described by the loss rate. The loss rate was determined by accelerated thermal degradation test, that is, incubate the protein at 37 centigrade for 48h, and no obvious degradation and precipitation were observed. The loss rate is less than 5% within the expiration date under appropriate storage condition.
<b>Storage</b>	Avoid repeated freeze/thaw cycles. Store at 2-8 centigrade for one month. Aliquot and store at -80 centigrade for 12 months.
<b>Storage Buffer</b>	20mM Tris, 150mM NaCl, pH8.0, containing 1mM EDTA, 1mM DTT, 0.01% SKL, 5% Trehalose and Proclin300.
<b>Reconstitution</b>	Reconstitute in 20mM Tris, 150mM NaCl (pH8.0) to a concentration of 0.1-1.0 mg/mL. Do not vortex.

## GENE INFORMATION

<b>Gene Name</b>	Slc2a4 solute carrier family 2 (facilitated glucose transporter), member 4 [ <i>Mus musculus</i> (house mouse) ]
<b>Official Symbol</b>	Slc2a4
<b>Synonyms</b>	Slc2a4; solute carrier family 2 (facilitated glucose transporter), member 4; GT2; twgy; Glut4; Glut-4; solute carrier family 2, facilitated glucose transporter member 4 glucose transporter type 4, insulin-responsive
<b>Gene ID</b>	20528

 Tel: 1-631-559-9269 1-516-512-3133

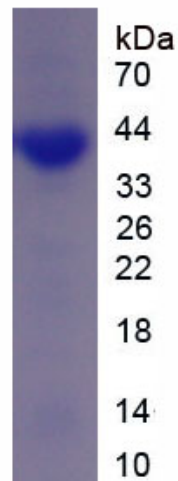
 Email: [info@creative-biomart.com](mailto:info@creative-biomart.com)  Fax: 1-631-938-8127

 45-1 Ramsey Road, Shirley, NY 11967, USA

mRNA Refseq [NM\\_009204](#)

Protein Refseq [NP\\_033230](#)

UniProt ID [P14142](#)



 Tel: 1-631-559-9269 1-516-512-3133

 Email: [info@creative-biomart.com](mailto:info@creative-biomart.com)  Fax: 1-631-938-8127

 45-1 Ramsey Road, Shirley, NY 11967, USA