

Recombinant Rat Slc3a2 protein, His & GST-tagged

Cat. No. Slc3a2-1197R **Lot. No.** (See product label)

SPECIFICATION

Product Overview	Recombinant Rat Slc3a2 aa. (Ile282~Phe523 (Accession # Q794F9) fused with N-terminal His & GST tag was produced in E. coli cells.
Species	Rat
Source	E.coli
ProteinLength	Ile282~Phe523
Description	Na ⁺ -independent neutral amino acid transporter; may have a role in cell growth and activation.
Form	Freeze-dried powder
Molecular Mass	Predicted Molecular Mass: 58.5kDa.
Endotoxin	<1.0EU per 1g (determined by the LAL method)
Purity	>95%
Characteristic	The isoelectric point is 5.6.
Applications	SDS-PAGE; WB; ELISA; IP.
Stability	The thermal stability is described by the loss rate of the target protein. The loss rate

 Tel: 1-631-559-9269 1-516-512-3133

 Email: info@creative-biomart.com  Fax: 1-631-938-8127

 45-1 Ramsey Road, Shirley, NY 11967, USA

was determined by accelerated thermal degradation test, that is, incubate the protein at 37°C for 48h, and no obvious degradation and precipitation were observed. (Referring from China Biological Products Standard, which was calculated by the Arrhenius equation.) The loss of this protein is less than 5% within the expiration date under appropriate storage condition.

Storage	Avoid repeated freeze/thaw cycles. Store at 2-8°C for one month. Aliquot and store at -80°C for 12 months.
Storage buffer	Supplied as lyophilized form in PBS, pH7.4, containing 5% sucrose, 0.01% sarcosyl.
Reconstitution	Reconstitute in sterile PBS, pH7.2-pH7.4.

GENE INFORMATION

Gene Name	Slc3a2 solute carrier family 3 member 2 [<i>Rattus norvegicus</i> (Norway rat)]
Official Symbol	Slc3a2
Synonyms	Slc3a2; solute carrier family 3 member 2; Mdu1; 4F2 cell-surface antigen heavy chain; 4F2hc; antigen identified by monoclonal antibodies 4F2; solute carrier family 3 (activators of dibasic and neutral amino acid transport), member 2; solute carrier family 3 (amino acid transporter heavy chain), member 2
Gene ID	50567
mRNA Refseq	NM_001271089.2
Protein Refseq	NP_001258018.1
UniProt ID	Q794F9

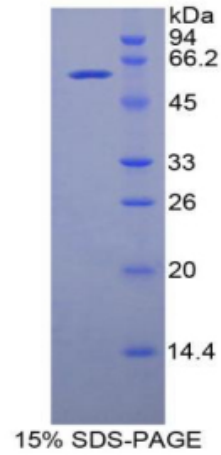
 Tel: 1-631-559-9269 1-516-512-3133

 Email: info@creative-biomart.com  Fax: 1-631-938-8127

 45-1 Ramsey Road, Shirley, NY 11967, USA



SDS-PAGE



Tel: 1-631-559-9269 1-516-512-3133

Email: info@creative-biomart.com Fax: 1-631-938-8127

45-1 Ramsey Road, Shirley, NY 11967, USA