

## Recombinant Rat Slc6a3 protein, His & T7-tagged

**Cat. No.** Slc6a3-1725R    **Lot. No.** (See product label)

### SPECIFICATION

<b>Product Overview</b>	Recombinant Rat Slc6a3 aa. (Ile562~Leu619 (Accession # P23977)) fused with N-terminal His & T7 tag was produced in E. coli cells.
<b>Species</b>	Rat
<b>Source</b>	E.coli
<b>ProteinLength</b>	Ile562~Leu619
<b>Description</b>	Acts as a sodium-dependent dopamine transporter; may play a role in regulation of dopamine metabolism and signaling.
<b>Form</b>	Freeze-dried powder
<b>Molecular Mass</b>	Predicted Molecular Mass: 10.5kDa
<b>Endotoxin</b>	<1.0EU per 1ug (determined by the LAL method)
<b>Purity</b>	>95%
<b>Characteristic</b>	The isoelectric point is 9.4.
<b>Applications</b>	SDS-PAGE; WB; ELISA; IP.
<b>Stability</b>	The thermal stability is described by the loss rate of the target protein. The loss rate

 Tel: 1-631-559-9269    1-516-512-3133

 Email: [info@creative-biomart.com](mailto:info@creative-biomart.com)     Fax: 1-631-938-8127

 45-1 Ramsey Road, Shirley, NY 11967, USA

was determined by accelerated thermal degradation test, that is, incubate the protein at 37°C for 48h, and no obvious degradation and precipitation were observed. (Referring from China Biological Products Standard, which was calculated by the Arrhenius equation.) The loss of this protein is less than 5% within the expiration date under appropriate storage condition.

<b>Storage</b>	Avoid repeated freeze/thaw cycles. Store at 2-8°C for one month. Aliquot and store at -80°C for 12 months.
<b>Storage buffer</b>	Supplied as lyophilized form in PBS, pH7.4, containing 5% trehalose, 0.01% sarcosyl.
<b>Reconstitution</b>	Reconstitute in sterile PBS, pH7.2-pH7.4.

## GENE INFORMATION

**Gene Name** [Slc6a3 solute carrier family 6 member 3 \[ Rattus norvegicus \(Norway rat\) \]](#)

**Official Symbol** [Slc6a3](#)

**Synonyms** Slc6a3; solute carrier family 6 member 3; Dat1; sodium-dependent dopamine transporter; DA transporter; DAT; solute carrier family 6 (neurotransmitter transporter), member 3; solute carrier family 6 (neurotransmitter transporter, dopamine), member 3

**Gene ID** [24898](#)

**mRNA Refseq** [NM\\_012694.2](#)

**Protein Refseq** [NP\\_036826.1](#)

**UniProt ID** [P23977](#)

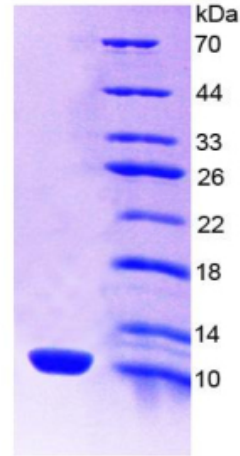
 Tel: 1-631-559-9269 1-516-512-3133

 Email: [info@creative-biomart.com](mailto:info@creative-biomart.com)  Fax: 1-631-938-8127

 45-1 Ramsey Road, Shirley, NY 11967, USA



SDS-PAGE



Tel: 1-631-559-9269 1-516-512-3133

Email: [info@creative-biomart.com](mailto:info@creative-biomart.com) Fax: 1-631-938-8127

45-1 Ramsey Road, Shirley, NY 11967, USA