

## Recombinant Mouse Slco1b2 Protein, His-tagged

Cat. No. Slco1b2-2700M Lot. No. (See product label)

### SPECIFICATION

<b>Product Overview</b>	Recombinant Mouse Slco1b2 Protein (Phe421-Tyr533) with a N-His tag was expressed in E. coli.
<b>Species</b>	Mouse
<b>Source</b>	E.coli
<b>ProteinLength</b>	Phe421-Tyr533
<b>Description</b>	<p>Predicted to enable bile acid transmembrane transporter activity; oligopeptide transmembrane transporter activity; and sodium-independent organic anion transmembrane transporter activity. Predicted to be involved in bile acid and bile salt transport; oligopeptide transport; and sodium-independent organic anion transport.</p> <p>Predicted to act upstream of or within ion transport. Predicted to be located in basolateral plasma membrane. Predicted to be integral component of plasma membrane. Human ortholog(s) of this gene implicated in bilirubin metabolic disorder. Orthologous to several human genes including SLCO1B3 (solute carrier organic anion transporter family member 1B3).</p>
<b>Form</b>	Freeze-dried powder
<b>Molecular Mass</b>	<p>Predicted Molecular Mass: 16.3 kDa</p> <p>Accurate Molecular Mass: 16 kDa</p>
<b>Endotoxin</b>	<1.0 EU per 1g (determined by the LAL method).

 Tel: 1-631-559-9269 1-516-512-3133

 Email: [info@creative-biomart.com](mailto:info@creative-biomart.com)  Fax: 1-631-938-8127

 45-1 Ramsey Road, Shirley, NY 11967, USA

<b>Purity</b>	> 90%
<b>Applications</b>	Positive Control; Immunogen; SDS-PAGE; WB.
<b>Stability</b>	The thermal stability is described by the loss rate. The loss rate was determined by accelerated thermal degradation test, that is, incubate the protein at 37 centigrade for 48h, and no obvious degradation and precipitation were observed. The loss rate is less than 5% within the expiration date under appropriate storage condition.
<b>Storage</b>	Avoid repeated freeze/thaw cycles. Store at 2-8 centigrade for one month. Aliquot and store at -80 centigrade for 12 months.
<b>Storage Buffer</b>	20mM Tris, 150mM NaCl, pH8.0, containing 1mM EDTA, 1mM DTT, 0.01% SKL, 5% Trehalose and Proclin300.
<b>Reconstitution</b>	Reconstitute in 20mM Tris, 150mM NaCl (pH8.0) to a concentration of 0.1-1.0 mg/mL. Do not vortex.

## GENE INFORMATION

<b>Gene Name</b>	<a href="#">Slco1b2 solute carrier organic anion transporter family, member 1b2 [ Mus musculus (house mouse) ]</a>
<b>Official Symbol</b>	<a href="#">Slco1b2</a>
<b>Synonyms</b>	Slco1b2; solute carrier organic anion transporter family, member 1b2; OATP2; Oatp4; Ist-1; OATP-C; mlst-1; Oatp1b2; Slc21a6; Slc21a10; 7330442B20Rik; solute carrier organic anion transporter family member 1B2 liver-specific organic anion transporter 1 solute carrier family 21 (organic anion transporter), member 10 solute carrier family 21 (organic anion transporter), member 6

 Tel: 1-631-559-9269 1-516-512-3133

 Email: [info@creative-biomart.com](mailto:info@creative-biomart.com)  Fax: 1-631-938-8127

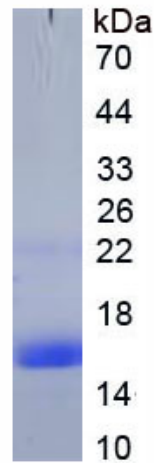
 45-1 Ramsey Road, Shirley, NY 11967, USA

Gene ID 28253

mRNA Refseq NM\_020495

Protein Refseq NP\_065241

UniProt ID Q9JL3



Tel: 1-631-559-9269 1-516-512-3133

Email: [info@creative-biomart.com](mailto:info@creative-biomart.com) Fax: 1-631-938-8127

45-1 Ramsey Road, Shirley, NY 11967, USA