

Recombinant Rat Slit3 protein, His & S-tagged

Cat. No. Slit3-7992R **Lot. No.** (See product label)

SPECIFICATION

Product Overview	Recombinant Rat Slit3 aa. (Asn62~Asn119 (Accession # O88280)) fused with N-terminal His & S tag was produced in E. coli cells.
Species	Rat
Source	E.coli
ProteinLength	Asn62~Asn119
Description	Localized to mitochondria; has less conservation with Drosophila slit than family members slit1 and slit2; may play a role in neurogenesis.
Form	Freeze-dried powder
Molecular Mass	Predicted Molecular Mass: 12.6kDa
Endotoxin	<1.0EU per 1ug (determined by the LAL method)
Purity	>95%
Characteristic	The isoelectric point is 6.2.
Applications	SDS-PAGE; WB; ELISA; IP
Stability	The thermal stability is described by the loss rate of the target protein. The loss rate

 Tel: 1-631-559-9269 1-516-512-3133

 Email: info@creative-biomart.com  Fax: 1-631-938-8127

 45-1 Ramsey Road, Shirley, NY 11967, USA

was determined by accelerated thermal degradation test, that is, incubate the protein at 37°C for 48h, and no obvious degradation and precipitation were observed. (Referring from China Biological Products Standard, which was calculated by the Arrhenius equation.) The loss of this protein is less than 5% within the expiration date under appropriate storage condition.

Storage	Avoid repeated freeze/thaw cycles. Store at 2-8°C for one month. Aliquot and store at -80°C for 12 months.
Storage Buffer	Supplied as lyophilized form in PBS, pH7.4, containing 5% sucrose, 0.01% sarcosyl.
Reconstitution	Reconstitute in sterile PBS, pH7.2-pH7.4.

GENE INFORMATION

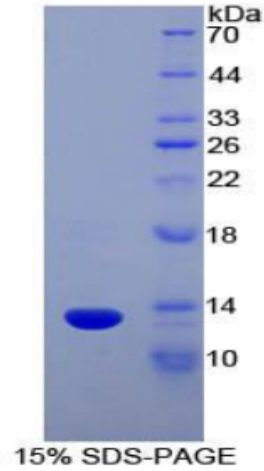
Gene Name	Slit3 slit guidance ligand 3 [<i>Rattus norvegicus</i> (Norway rat)]
Official Symbol	Slit3
Synonyms	Slit3; slit guidance ligand 3; Megf5; slit homolog 3 protein; multiple EGF-like domains protein 5; multiple epidermal growth factor-like domains 5; multiple epidermal growth factor-like domains protein 5; slit-3
Gene ID	83467
mRNA Refseq	NM_031321.1
Protein Refseq	NP_112611.1
UniProt ID	O88280

 Tel: 1-631-559-9269 1-516-512-3133

 Email: info@creative-biomart.com  Fax: 1-631-938-8127

 45-1 Ramsey Road, Shirley, NY 11967, USA

SDS-PAGE



 Tel: 1-631-559-9269 1-516-512-3133

 Email: info@creative-biomart.com  Fax: 1-631-938-8127

 45-1 Ramsey Road, Shirley, NY 11967, USA