

Recombinant Rat Slpi Protein, His&GST-tagged

Cat. No. Slpi-2082R **Lot. No.** (See product label)

SPECIFICATION

Product Overview	Recombinant Rat Slpi Protein (Gly26-Val130) with N-His&GST tag was expressed in E. coli.
Species	Rat
Source	E.coli
ProteinLength	Gly26-Val130
Description	Predicted to enable enzyme binding activity; nucleic acid binding activity; and serine-type endopeptidase inhibitor activity. Involved in negative regulation of inflammatory response. Predicted to be located in Golgi apparatus. Predicted to be active in extracellular space. Biomarker of chronic obstructive pulmonary disease; endophthalmitis; middle cerebral artery infarction; myocardial infarction; and polycystic ovary syndrome. Orthologous to human SLPI (secretory leukocyte peptidase inhibitor).
Form	Freeze-dried powder
Molecular Mass	Predicted Molecular Mass: 41.4 kDa Accurate Molecular Mass: 44 kDa
Purity	> 90%
Applications	Positive Control; Immunogen; SDS-PAGE; WB.

 Tel: 1-631-559-9269 1-516-512-3133

 Email: info@creative-biomart.com  Fax: 1-631-938-8127

 45-1 Ramsey Road, Shirley, NY 11967, USA

Stability	The thermal stability is described by the loss rate. The loss rate was determined by accelerated thermal degradation test, that is, incubate the protein at 37 centigrade for 48h, and no obvious degradation and precipitation were observed. The loss rate is less than 5% within the expiration date under appropriate storage condition.
Storage	Avoid repeated freeze/thaw cycles. Store at 2-8 centigrade for one month. Aliquot and store at -80 centigrade for 12 months.
Storage Buffer	20mM Tris, 150mM NaCl, pH8.0, containing 1mM EDTA, 1mM DTT, 0.01% SKL, 5% Trehalose and Proclin300.
Reconstitution	Reconstitute in 20mM Tris, 150mM NaCl (pH8.0) to a concentration of 0.1-1.0 mg/mL. Do not vortex.

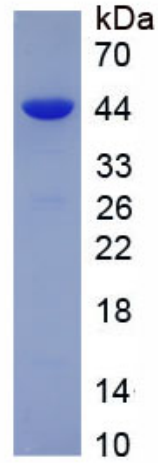
GENE INFORMATION

Gene Name	Slpi secretory leukocyte peptidase inhibitor [Rattus norvegicus (Norway rat)]
Official Symbol	Slpi
Synonyms	SLPI; secretory leukocyte peptidase inhibitor; secretory leukocyte protease inhibitor;
Gene ID	84386
mRNA Refseq	NM_053372
Protein Refseq	NP_445824
UniProt ID	Q9WUQ4

 Tel: 1-631-559-9269 1-516-512-3133

 Email: info@creative-biomart.com  Fax: 1-631-938-8127

 45-1 Ramsey Road, Shirley, NY 11967, USA



Tel: 1-631-559-9269 1-516-512-3133

Email: info@creative-biomart.com Fax: 1-631-938-8127

45-1 Ramsey Road, Shirley, NY 11967, USA