

Recombinant Rat Smad1 protein, His-tagged

Cat. No. Smad1-658R **Lot. No.** (See product label)

SPECIFICATION

Product Overview	Recombinant Rat Smad1 aa. (His273~Ser468 (Accession # P97588)) fused with N-terminal His tag was produced in E. coli cells.
Species	Rat
Source	E.coli
ProteinLength	His273~Ser468
Description	A transcriptional activator; activated by bone morphogenetic protein 4 (BMP4).
Form	Freeze-dried powder
Molecular Mass	25kDa as determined by SDS-PAGE reducing conditions
Endotoxin	<1.0EU per 1g (determined by the LAL method)
Purity	>95%
Characteristic	The isoelectric point is 7.
Applications	SDS-PAGE; WB; ELISA; IP
Stability	The thermal stability is described by the loss rate. The loss rate was determined by accelerated thermal degradation test, that is, incubate the protein at 37°C for 48h,

 Tel: 1-631-559-9269 1-516-512-3133

 Email: info@creative-biomart.com  Fax: 1-631-938-8127

 45-1 Ramsey Road, Shirley, NY 11967, USA

and no obvious degradation and precipitation were observed. The loss rate is less than 5% within the expiration date under appropriate storage condition.

Storage

Avoid repeated freeze/thaw cycles. Store at 2-8°C for one month. Aliquot and store at -80°C for 12 months.

Storage buffer

Supplied as lyophilized form in PBS, pH7.4, containing 5% trehalose, 0.01% sarcosyl.

Reconstitution

Reconstitute in sterile PBS, pH7.2-pH7.4.

GENE INFORMATION

Gene Name

[Smad1 SMAD family member 1 \[Rattus norvegicus \(Norway rat\) \]](#)

Official Symbol

[Smad1](#)

Synonyms

Smad1; SMAD family member 1; Madh1; mothers against decapentaplegic homolog 1; MAD (mothers against decapentaplegic, Drosophila) homolog 1; MAD homolog 1; MAD homolog1 (mothers against decapentaplegic, Drosophila); SMAD 1; SMAD, mothers against DPP homolog 1; mothers against DPP homolog 1

Gene ID

[25671](#)

mRNA Refseq

[NM_013130.2](#)

Protein Refseq

[NP_037262.2](#)

UniProt ID

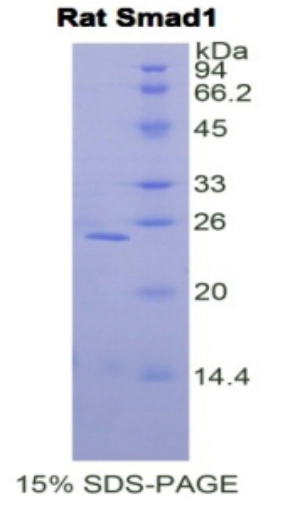
[P97588](#)

 Tel: 1-631-559-9269 1-516-512-3133

 Email: info@creative-biomart.com  Fax: 1-631-938-8127

 45-1 Ramsey Road, Shirley, NY 11967, USA

SDS-PAGE



 Tel: 1-631-559-9269 1-516-512-3133

 Email: info@creative-biomart.com  Fax: 1-631-938-8127

 45-1 Ramsey Road, Shirley, NY 11967, USA