

## Recombinant Rat Smpd2 protein, His & GST-tagged

Cat. No. Smpd2-8254R Lot. No. (See product label)

### SPECIFICATION

<b>Product Overview</b>	Recombinant Rat Smpd2 aa. (Met1~Ala324 (Accession # Q9ET64)) fused with N-terminal His & GST tag was produced in E. coli cells.
<b>Species</b>	Rat
<b>Source</b>	E.coli
<b>ProteinLength</b>	Met1~Ala324
<b>Description</b>	Catalyzes the Mg <sup>2+</sup> dependent hydrolysis of sphingomyelin to form N-acylsphingosine and choline phosphate; also has a lower activity for the hydrolysis of lyso-platelet activating factor to 1-alkylglycerol.
<b>Form</b>	Freeze-dried powder
<b>Molecular Mass</b>	Predicted Molecular Mass: 66.9kDa.
<b>Endotoxin</b>	<1.0EU per 1ug (determined by the LAL method)
<b>Purity</b>	>90%
<b>Characteristic</b>	The isoelectric point is 7.3.
<b>Applications</b>	SDS-PAGE; WB; ELISA; IP.

 Tel: 1-631-559-9269 1-516-512-3133

 Email: [info@creative-biomart.com](mailto:info@creative-biomart.com)  Fax: 1-631-938-8127

 45-1 Ramsey Road, Shirley, NY 11967, USA

**Stability** The thermal stability is described by the loss rate of the target protein. The loss rate was determined by accelerated thermal degradation test, that is, incubate the protein at 37°C for 48h, and no obvious degradation and precipitation were observed. (Referring from China Biological Products Standard, which was calculated by the Arrhenius equation.) The loss of this protein is less than 5% within the expiration date under appropriate storage condition.

**Storage** Avoid repeated freeze/thaw cycles. Store at 2-8°C for one month. Aliquot and store at -80°C for 12 months.

**Storage Buffer** Supplied as lyophilized form in 20mM Tris, 150mM NaCl, pH8.0, containing 1mM EDTA, 1mM DTT, 0.01% sarcosyl, 5% trehalose, and preservative.

**Reconstitution** Reconstitute in sterile ddH<sub>2</sub>O.

## GENE INFORMATION

**Gene Name** [Smpd2 sphingomyelin phosphodiesterase 2 \[ Rattus norvegicus \(Norway rat\) \]](#)

**Official Symbol** [Smpd2](#)

**Synonyms** Smpd2; sphingomyelin phosphodiesterase 2; nSMase; N-SMase; lyso-PAF-PLC; lyso-platelet-activating factor-phospholipase C; neutral sphingomyelinase; sphingomyelin phosphodiesterase 2, neutral membrane

**Gene ID** [83537](#)

**mRNA Refseq** [NM\\_031360.2](#)

**Protein Refseq** [NP\\_112650.1](#)

 Tel: 1-631-559-9269 1-516-512-3133

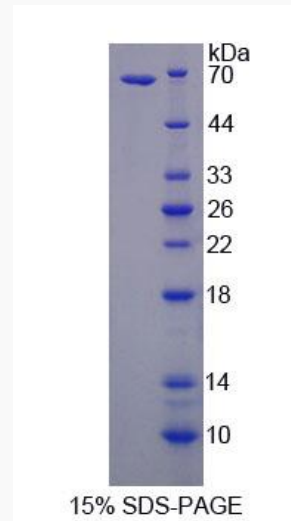
 Email: [info@creative-biomart.com](mailto:info@creative-biomart.com)  Fax: 1-631-938-8127

 45-1 Ramsey Road, Shirley, NY 11967, USA

UniProt ID

Q9ET64

SDS-PAGE



 Tel: 1-631-559-9269 1-516-512-3133

 Email: [info@creative-biomart.com](mailto:info@creative-biomart.com)  Fax: 1-631-938-8127

 45-1 Ramsey Road, Shirley, NY 11967, USA