

Recombinant Mouse Smpd3 Protein, His-tagged

Cat. No. Smpd3-2086M Lot. No. (See product label)

SPECIFICATION

Product Overview	Recombinant Mouse Smpd3 Protein (Asp415-Glu652) with N-His tag was expressed in E. coli.
Species	Mouse
Source	E.coli
ProteinLength	Asp415-Glu652
Description	Enables identical protein binding activity; neutral sphingomyelin phosphodiesterase activity; and phospholipid binding activity. Involved in sphingomyelin metabolic process. Acts upstream of or within several processes, including animal organ development; enzyme linked receptor protein signaling pathway; and sphingolipid metabolic process. Located in Golgi cis cisterna and plasma membrane. Is expressed in several structures, including alimentary system; limb; nervous system; sensory organ; and skeleton. Used to study hypopituitarism; osteogenesis imperfecta; osteogenesis imperfecta type 2; and osteogenesis imperfecta type 3. Orthologous to human SMPD3 (sphingomyelin phosphodiesterase 3).
Form	Freeze-dried powder
Molecular Mass	Predicted Molecular Mass: 30.1 kDa Accurate Molecular Mass: 33 kDa
Purity	> 95%

 Tel: 1-631-559-9269 1-516-512-3133

 Email: info@creative-biomart.com  Fax: 1-631-938-8127

 45-1 Ramsey Road, Shirley, NY 11967, USA

Applications	Positive Control; Immunogen; SDS-PAGE; WB.
Stability	The thermal stability is described by the loss rate. The loss rate was determined by accelerated thermal degradation test, that is, incubate the protein at 37 centigrade for 48h, and no obvious degradation and precipitation were observed. The loss rate is less than 5% within the expiration date under appropriate storage condition.
Storage	Avoid repeated freeze/thaw cycles. Store at 2-8 centigrade for one month. Aliquot and store at -80 centigrade for 12 months.
Storage Buffer	PBS, pH7.4, containing 0.01% SKL, 1mM DTT, 5% Trehalose and Proclin300.
Reconstitution	Reconstitute in 20mM Tris, 150mM NaCl (pH8.0) to a concentration of 0.1-1.0 mg/mL. Do not vortex.

GENE INFORMATION

Gene Name	Smpd3 sphingomyelin phosphodiesterase 3, neutral [Mus musculus (house mouse)]
Official Symbol	Smpd3
Synonyms	SMPD3; sphingomyelin phosphodiesterase 3, neutral; sphingomyelin phosphodiesterase 3; nSMase-2; neutral sphingomyelinase 2; neutral sphingomyelinase II; fro; nSMase2; AI427456; AW537966; 4631433G07Rik;
Gene ID	58994
mRNA Refseq	NM_021491
Protein Refseq	NP_067466

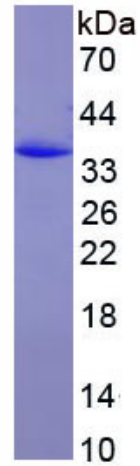
 Tel: 1-631-559-9269 1-516-512-3133

 Email: info@creative-biomart.com  Fax: 1-631-938-8127

 45-1 Ramsey Road, Shirley, NY 11967, USA

UniProt ID

Q9JJY3



 Tel: 1-631-559-9269 1-516-512-3133

 Email: info@creative-biomart.com  Fax: 1-631-938-8127

 45-1 Ramsey Road, Shirley, NY 11967, USA