

Recombinant SARS-CoV-2 (Wuhan-Hu-1) Spike Glycoprotein (Full-Length, 1-1211), C-His-tagged

Cat. No. Spike-12V Lot. No. (See product label)

SPECIFICATION

Product Overview	<p>Recombinant full-length SARS-CoV-2 spike glycoprotein, manufactured in Chinese hamster ovary (CHO) cells to high yield and purity. The furin cleavage site (amino acids 682-685) has been mutated from RRAR to SRAS and the transmembrane domain and intravirion part replaced with a glycine-serine linker and a His-tag. Horseradish peroxidase conjugated protein also available. SARS-CoV-2, previously known as the 2019 Novel Coronavirus (2019-nCoV), causes the pandemic COVID-19 disease.</p>
Species	SARS-CoV-2
Source	CHO
ProteinLength	1-1211
Description	<p>Severe acute respiratory syndrome coronavirus 2 (SARS-CoV-2) is an enveloped, positive-sense, single-stranded RNA virus that causes coronavirus disease 2019 (COVID-19). Virus particles include the RNA genetic material and structural proteins needed for invasion of host cells. Once inside the cell the infecting RNA is used to encode structural proteins that make up virus particles, nonstructural proteins that direct virus assembly, transcription, replication and host control and accessory proteins whose function has not been determined.~ The structural proteins of SARS-CoV-2 include the envelope protein (E), spike or surface glycoprotein (S), membrane protein (M) and the nucleocapsid protein (N). The spike glycoprotein is found on the</p>

 Tel: 1-631-559-9269 1-516-512-3133

 Email: info@creative-biomart.com  Fax: 1-631-938-8127

 45-1 Ramsey Road, Shirley, NY 11967, USA

outside of the virus particle and gives coronavirus viruses their crown-like appearance. This glycoprotein mediates attachment of the virus particle and entry into the host cell. S protein is an important target for vaccine development, antibody therapies and diagnostic antigen-based tests.

Form Liquid

Molecular Mass Expected Molecular Weight: 134 kDa
Observed Molecular Weight: 170 kDa

Purity > 95%

Applications SARS-CoV-2 full-length spike binds ACE2 when used as capture antigen in immunoassay (ELISA), at a concentration between 0.5-5.0 µg/mL.

Storage Short Term Storage: -80 centigrade
Long Term Storage: -80 centigrade

Storage Buffer Dulbecco's phosphate buffered saline (DPBS), pH 7.4.

Shipping Dry Ice

GENE INFORMATION

Gene Name [S surface glycoprotein \[Severe acute respiratory syndrome coronavirus 2 \]](#)

Official Symbol [S](#)

Synonyms S; surface glycoprotein; structural protein; spike protein

Gene ID [43740568](#)

 Tel: 1-631-559-9269 1-516-512-3133

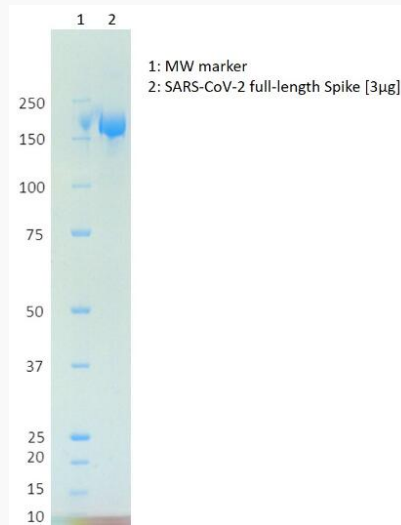
 Email: info@creative-biomart.com  Fax: 1-631-938-8127

 45-1 Ramsey Road, Shirley, NY 11967, USA

Protein Refseq YP_009724390

UniProt ID P0DTC2

SDS-PAGE



 Tel: 1-631-559-9269 1-516-512-3133

 Email: info@creative-biomart.com  Fax: 1-631-938-8127

 45-1 Ramsey Road, Shirley, NY 11967, USA