

Recombinant SARS-COV-2 Spike RBD (Delta B.1.617.2) protein, His-tagged

Cat. No. Spike-1588V Lot. No. (See product label)

SPECIFICATION

Product Overview	Recombinant SARS-COV-2 Spike RBD (Delta B.1.617.2) protein(QHD43416.1)(Arg319-Phe541(L452R, T478K)), fused with C-terminal His tag, was expressed in HEK293.
Species	SARS-COV-2
Source	HEK293
ProteinLength	Arg319-Phe541(L452R, T478K)
Form	Lyophilized from 0.22µm filtered solution in PBS (pH 7.4). Normally 8% trehalose is added as protectant before lyophilization.
Bio-activity	Immobilized SARS-CoV-2 Spike RBD (Delta B.1.617.2), His Tag at 1µg/ml (100µl/well) on the plate. Dose response curve for Human ACE2, hFc Tag with the EC50 of 9.8ng/ml determined by ELISA.
Molecular Mass	The protein has a predicted MW of 26.26 kDa. Due to glycosylation, the protein migrates to 35-40 kDa based on Tris-Bis PAGE result.
Endotoxin	Less than 1EU per µg by the LAL method.
Purity	> 95% as determined by Tris-Bis PAGE;> 95% as determined by HPLC

 Tel: 1-631-559-9269 1-516-512-3133

 Email: info@creative-biomart.com  Fax: 1-631-938-8127

 45-1 Ramsey Road, Shirley, NY 11967, USA

Storage Reconstituted protein stable at -80°C for 12 months, 4°C for 1 week. Use a manual defrost freezer and avoid repeated freeze-thaw cycles.

Reconstitution Centrifuge tubes before opening. Reconstituting to a concentration more than 100 µg/ml is recommended. Dissolve the lyophilized protein in distilled water.

GENE INFORMATION

Gene Name [S surface glycoprotein \[Severe acute respiratory syndrome coronavirus 2 \]](#)

Official Symbol [S](#)

Synonyms Spike; S1 protein; Spike glycoprotein Subunit1; S glycoprotein Subunit1; Spike protein S1

Gene ID [43740568](#)

Protein Refseq [YP_009724390](#)

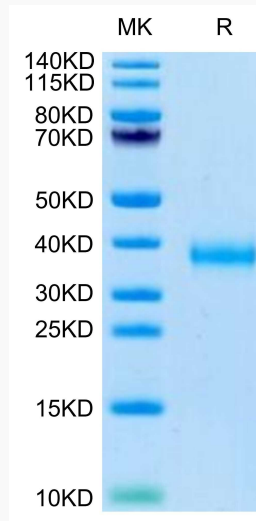
UniProt ID [P0DTC2](#)

 Tel: 1-631-559-9269 1-516-512-3133

 Email: info@creative-biomart.com  Fax: 1-631-938-8127

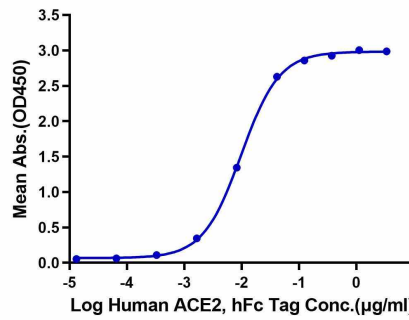
 45-1 Ramsey Road, Shirley, NY 11967, USA

Tris-Bis PAGE



ELISA

SARS-CoV-2 Spike RBD (Delta B.1.617.2), His Tag ELISA
 0.1µg SARS-CoV-2 Spike RBD (Delta B.1.617.2), His Tag Per Well



Tel: 1-631-559-9269 1-516-512-3133

Email: info@creative-biomart.com Fax: 1-631-938-8127

45-1 Ramsey Road, Shirley, NY 11967, USA