

Recombinant SARS-COV-2 Spike S1 (Lambda C.37) protein, His-tagged

Cat. No. Spike-1589V **Lot. No.** (See product label)

SPECIFICATION

Product Overview	Recombinant SARS-COV-2 Spike S1 (Lambda C.37) protein(QHD43416.1)(Gln14-Arg683(G75V, T76I, R246N, 247-253 del, L452Q, F490S, D614G)), fused with C-terminal His tag, was expressed in HEK293.
Species	SARS-COV-2
Source	HEK293
ProteinLength	Gln14-Arg683(G75V, T76I, R246N, 247-253 del, L452Q, F490S, D614G)
Form	Lyophilized from 0.22µm filtered solution in PBS (pH 7.4). Normally 8% trehalose is added as protectant before lyophilization.
Bio-activity	Immobilized SARS-CoV-2 Spike S1 (Lambda C.37), His Tag at 2µg/ml (100µl/well) on the plate. Dose response curve for Human ACE2, hFc Tag with the EC50 of 21.8ng/ml determined by ELISA.
Molecular Mass	The protein has a predicted MW of 75.28 kDa. Due to glycosylation, the protein migrates to 100-120 kDa based on Tris-Bis PAGE result.
Endotoxin	Less than 1EU per µg by the LAL method.
Purity	> 95% as determined by Tris-Bis PAGE;> 95% as determined by HPLC

 Tel: 1-631-559-9269 1-516-512-3133

 Email: info@creative-biomart.com  Fax: 1-631-938-8127

 45-1 Ramsey Road, Shirley, NY 11967, USA

Storage Reconstituted protein stable at -80°C for 12 months, 4°C for 1 week. Use a manual defrost freezer and avoid repeated freeze-thaw cycles.

Reconstitution Centrifuge tubes before opening. Reconstituting to a concentration more than 100 µg/ml is recommended. Dissolve the lyophilized protein in distilled water.

GENE INFORMATION

Gene Name [S surface glycoprotein \[Severe acute respiratory syndrome coronavirus 2 \]](#)

Official Symbol [S](#)

Synonyms Spike; S1 protein; Spike glycoprotein Subunit1; S glycoprotein Subunit1; Spike protein S1

Gene ID [43740568](#)

Protein Refseq [YP_009724390](#)

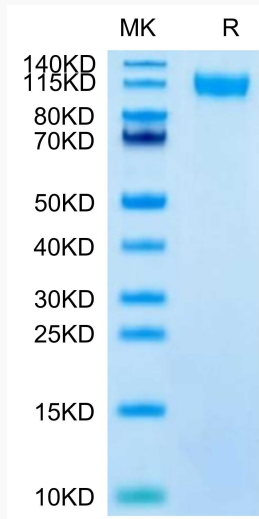
UniProt ID [P0DTC2](#)

 Tel: 1-631-559-9269 1-516-512-3133

 Email: info@creative-biomart.com  Fax: 1-631-938-8127

 45-1 Ramsey Road, Shirley, NY 11967, USA

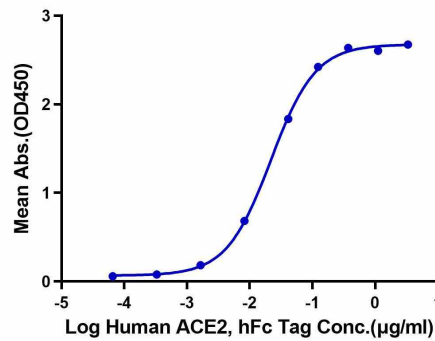
Tris-Bis PAGE



ELISA

SARS-CoV-2 Spike S1 (Lambda C.37), His Tag ELISA

0.2µg SARS-CoV-2 Spike S1 (Lambda C.37), His Tag Per Well



Tel: 1-631-559-9269 1-516-512-3133

Email: info@creative-biomart.com Fax: 1-631-938-8127

45-1 Ramsey Road, Shirley, NY 11967, USA