

Recombinant 2019-nCoV (2019 novel coronavirus) Spike protein S1, His/Avi-tagged

Cat. No. Spike-200V **Lot. No.** (See product label)

SPECIFICATION

Product Overview	Recombinant 2019-nCoV (2019 novel coronavirus) Spike protein S1 (Gln14-Arg683) was expressed from mammalian with a His tag and Avi at the C-terminal.
Species	Sars-Cov-2
Source	Mammalian Cells
ProteinLength	670
Description	The spike protein (S) of coronavirus (CoV) attaches the virus to its cellular receptor, angiotensin converting enzyme 2 (ACE2). A defined receptor-binding domain (RBD) on S mediates this interaction. The S protein plays key parts in the induction of neutralizing-antibody and T-cell responses, as well as protective immunity.
Form	Supplied as 0.22µm filtered solution in PBS (pH 7.4).
Molecular Mass	The protein has a predicted MW of 77.9 kDa. Due to glycosylation, the protein migrates to 110-120 kDa based on Bis-Tris PAGE result.
Endotoxin	Less than 1 EU per ug by the LAL method.
Purity	>95% as determined by Bis-Tris PAGE; >95% as determined by HPLC.
Storage	The product should be stored at -70 centigrade. Please do not repeated freeze-thaw

 Tel: 1-631-559-9269 1-516-512-3133

 Email: info@creative-biomart.com  Fax: 1-631-938-8127

 45-1 Ramsey Road, Shirley, NY 11967, USA

cycles.

Reconstitution

It is recommended that sterile water be added to the vial to prepare a stock solution of 0.25 mg/ml. Centrifuge the vial at 4 centigrade before opening to recover the entire contents.

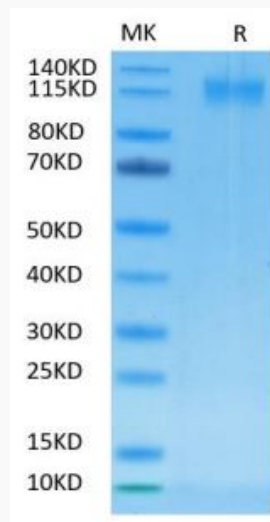
Warning

For Research Use Only.

GENE INFORMATION

Synonyms

BHT41_gp02

**Tris-Bis PAGE of
Spike-200V**


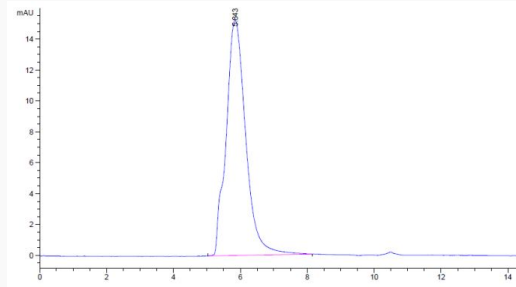
Recombinant 2019-nCoV Spike S1 protein on Tris-Bis PAGE under reduced condition. The purity is greater than 95%.

 Tel: 1-631-559-9269 1-516-512-3133

 Email: info@creative-biomart.com  Fax: 1-631-938-8127

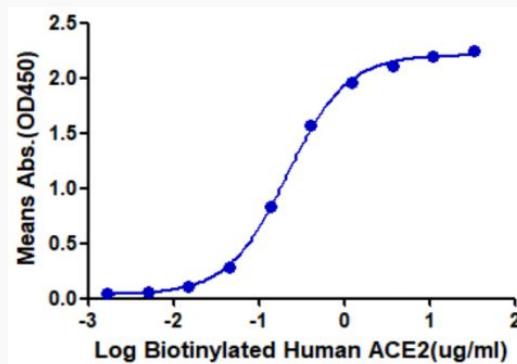
 45-1 Ramsey Road, Shirley, NY 11967, USA

HPLC Data of Spike-200V



The purity of 2019-nCoV Spike S1 is greater than 95% as determined by SEC-HPLC.

ELISA of Spike-200V



Immobilized nCov-S1 at 0.5 μ g/ml(100 μ l/Well). Dose response curve for Biotinylated Human ACE2 with the EC50 of 0.2 μ g/ml determined by ELISA.

Tel: 1-631-559-9269 1-516-512-3133

Email: info@creative-biomart.com Fax: 1-631-938-8127

45-1 Ramsey Road, Shirley, NY 11967, USA