

Recombinant COVID-19 Spike S1 protein, His-tagged

Cat. No. Spike-237V **Lot. No.** (See product label)

SPECIFICATION

Product Overview	Recombinant COVID-19 Spike S1 protein (Val16-Arg685) was fused to his-tag at the C-terminus and expressed in human 293 cells (HEK293).
Species	Sars-CoV-2
Source	HEK293
ProteinLength	Val16-Arg685
Description	It's been reported that SARS-CoV-2 can infect the human respiratory epithelial cells through interaction with the human ACE2 receptor. The spike protein is a large type I transmembrane protein containing two subunits, S1 and S2. S1 mainly contains a receptor binding domain (RBD), which is responsible for recognizing the cell surface receptor. S2 contains basic elements needed for the membrane fusion. The S protein plays key parts in the induction of neutralizing-antibody and T-cell responses, as well as protective immunity.
Predicted N Terminal	Val16
Form	Lyophilized from 0.22 µm filtered solution in PBS, pH7.4, 10% trehalose.
Molecular Mass	The protein has a calculated MW of 76.9 kDa. The protein migrates as 100-140 kDa under reducing (R) condition (SDS-PAGE) due to glycosylation.
Endotoxin	Less than 1.0 EU per µg by the LAL method.

 Tel: 1-631-559-9269 1-516-512-3133

 Email: info@creative-biomart.com  Fax: 1-631-938-8127

 45-1 Ramsey Road, Shirley, NY 11967, USA

Purity	>90% as determined by SDS-PAGE.
Storage	<p>For long term storage, the product should be stored at lyophilized state at -20 centigrade or lower.</p> <p>Please avoid repeated freeze-thaw cycles.</p> <p>This product is stable after storage at:</p> <p>-20 to -70 centigrade for 12 months in lyophilized state; -70 centigrade for 3 months under sterile conditions after reconstitution.</p>
Reconstitution	It is recommended that sterile water be added to the vial to prepare a stock solution of 0.2 mg/ml. Centrifuge the vial at 4°C before opening to recover the entire contents.
Shipping	Powder,RT

GENE INFORMATION

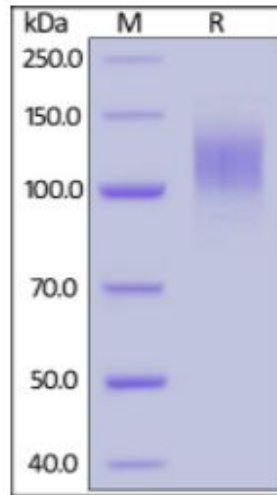
Gene Name	S
Official Symbol	S
Synonyms	spike glycoprotein
Gene ID	43740568
Protein Refseq	YP_009724390.1
UniProt ID	P0DTC2

 Tel: 1-631-559-9269 1-516-512-3133

 Email: info@creative-biomart.com  Fax: 1-631-938-8127

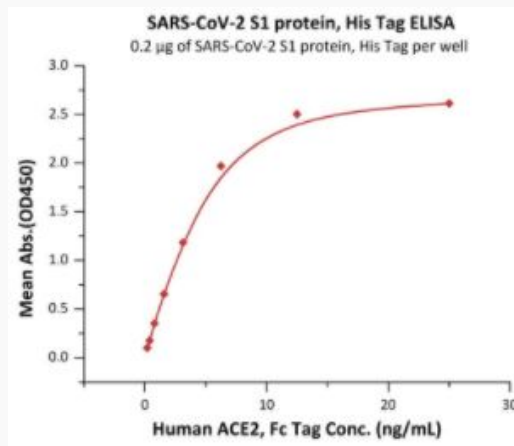
 45-1 Ramsey Road, Shirley, NY 11967, USA

SDS-PAGE of Spike-237V



COVID-19 S1 protein, His Tag on SDS-PAGE under reducing (R) condition. The gel was stained overnight with Coomassie Blue. The purity of the protein is greater than 90%.

Bioactivity-ELISA of Spike-237V



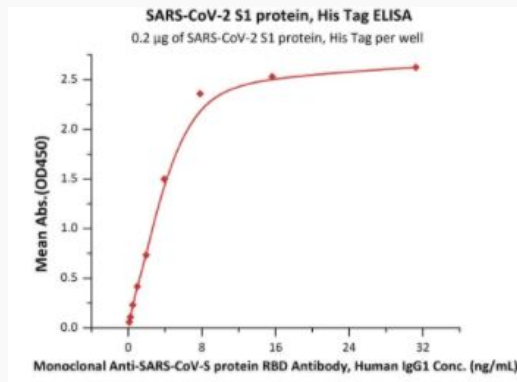
Immobilized COVID-19 S1 protein, His Tag at 2 µg/mL (100 µL/well) can bind Human ACE2, Fc Tag with a linear range of 0.2-6 ng/mL (QC tested).

Tel: 1-631-559-9269 1-516-512-3133

Email: info@creative-biomart.com Fax: 1-631-938-8127

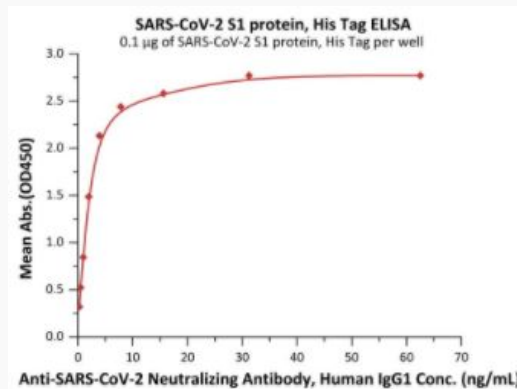
45-1 Ramsey Road, Shirley, NY 11967, USA

**Bioactivity-ELISA of
Spike-237V**



Immobilized COVID-19 S1 protein, His Tag at 2 µg/mL (100 µL/well) can bind Monoclonal Anti-COVID-19-S protein RBD Antibody, Human IgG1 with a linear range of 0.1-4 ng/mL (Routinely tested).

**Bioactivity-ELISA of
Spike-237V**

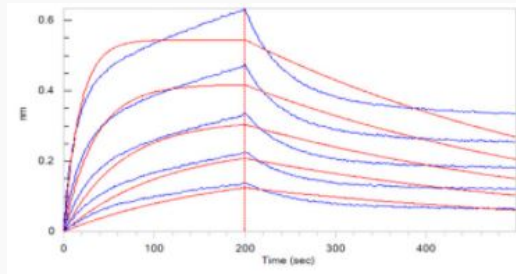


Immobilized COVID-19 S1 protein, His Tag at 1 µg/mL (100 µL/well) can bind Anti-COVID-19 Neutralizing Antibody, Human IgG1 with a linear range of 0.2441-7.8125 ng/mL (Routinely tested).

Tel: 1-631-559-9269 1-516-512-3133

Email: info@creative-biomart.com Fax: 1-631-938-8127

45-1 Ramsey Road, Shirley, NY 11967, USA




**Bioactivity-BLI of
Spike-237V**

Loaded Human ACE2, Fc Tag on Protein A Biosensor, can bind COVID-19 S1 protein, His Tag with an affinity constant of 21.8 nM as determined in BLI assay (ForteBio Octet Red96e) (Routinely tested).

 Tel: 1-631-559-9269 1-516-512-3133

 Email: info@creative-biomart.com  Fax: 1-631-938-8127

 45-1 Ramsey Road, Shirley, NY 11967, USA