

Recombinant COVID-19 Spike protein, His&Myc-tagged

Cat. No. Spike-251V **Lot. No.** (See product label)

SPECIFICATION

Product Overview	Recombinant COVID-19 Spike protein(YP_009724390.1)(319-541aa) was fused to His-tagged at N-terminus and Myc-tagged at C-terminus and expressed in HEK293.
Species	Sars-CoV-2
Source	HEK293
ProteinLength	Partial
Description	<p>Severe acute respiratory syndrome coronavirus 2 (SARS-CoV-2) is an enveloped, positive-sense, single-stranded RNA virus that causes coronavirus disease 2019 (COVID-19). Virus particles include the RNA genetic material and structural proteins needed for invasion of host cells. Once inside the cell the infecting RNA is used to encode structural proteins that make up virus particles, nonstructural proteins that direct virus assembly, transcription, replication and host control and accessory proteins whose function has not been determined.~ The structural proteins of SARS-CoV-2 include the envelope protein (E), spike or surface glycoprotein (S), membrane protein (M) and the nucleocapsid protein (N). The spike glycoprotein is found on the outside of the virus particle and gives coronavirus viruses their crown-like appearance. This glycoprotein mediates attachment of the virus particle and entry into the host cell. S protein is an important target for vaccine development, antibody therapies and diagnostic antigen-based tests.</p>
Form	If the delivery form is liquid, the default storage buffer is Tris/PBS-based buffer, 5%-

 Tel: 1-631-559-9269 1-516-512-3133

 Email: info@creative-biomart.com  Fax: 1-631-938-8127

 45-1 Ramsey Road, Shirley, NY 11967, USA

50% glycerol. If the delivery form is lyophilized powder, the buffer before lyophilization is Tris/PBS-based buffer, 6% Trehalose, pH 8.0.

Molecular Mass 30.1 kDa

AA Sequence
 RVQPTESIVRFPNITNLCPFGEVFNATRFASVYAWNRKRISNCVADYSVLYNSASFS
 TFKCYGVSPTKLNDLCFTNVYADSFVIRGDEVRQIAPGQTGKIADYNYKLPDDFTGC
 VIAWNSNNLDSKVGGNYNLYRLFRK SNLKPFERDISTEIYQAGSTPCNGVEGFNC
 YFPLQSYGFQPTNGVGYQPYRVVLSFELLHAPATVCGPK KSTNLVKNKCVNF

Purity Greater than 90% as determined by SDS-PAGE.

Notes Repeated freezing and thawing is not recommended. Store working aliquots at 4°C for up to one week.

Storage Store at -20°C upon receipt, aliquoting is necessary for multiple use. Avoid repeated freeze-thaw cycles.

Reconstitution It is recommended that sterile water be added to the vial to prepare a stock solution of 0.2 mg/ml. Centrifuge the vial at 4°C before opening to recover the entire contents.

GENE INFORMATION

Gene Name S

Official Symbol S

Synonyms Spike glycoprotein(RBD), Spike Protein (RBD)

Gene ID 43740568

 Tel: 1-631-559-9269 1-516-512-3133

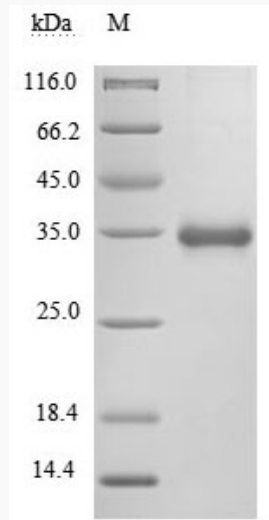
 Email: info@creative-biomart.com  Fax: 1-631-938-8127

 45-1 Ramsey Road, Shirley, NY 11967, USA

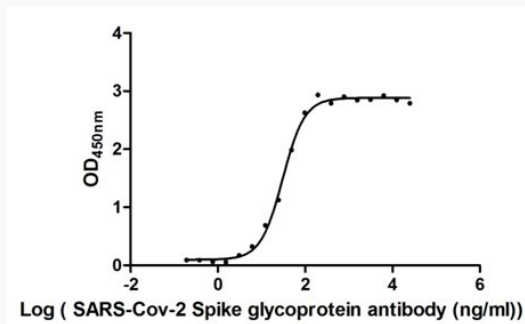
Protein Refseq YP_009724390.1

UniProt ID P0DTC2

SDS-PAGE of Spike-251V



Biological Activity of Spike-251V

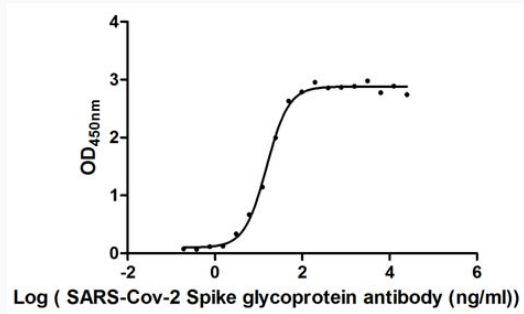


Tel: 1-631-559-9269 1-516-512-3133

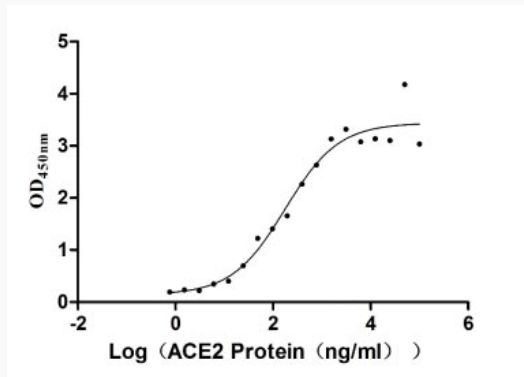
Email: info@creative-biomart.com Fax: 1-631-938-8127

45-1 Ramsey Road, Shirley, NY 11967, USA

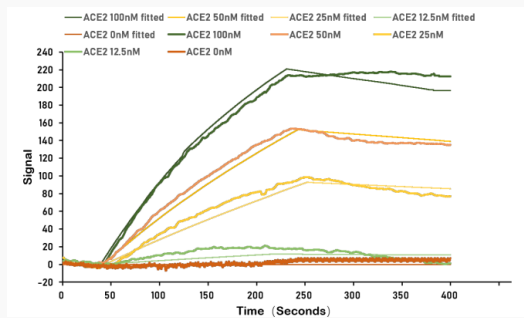
Biological Activity of Spike-251V



Biological Activity of Spike-251V



Biological Activity of Spike-251V



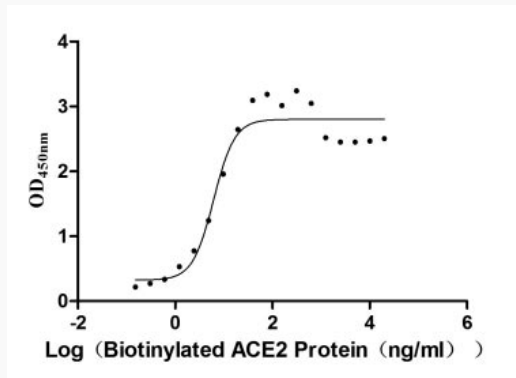
Tel: 1-631-559-9269 1-516-512-3133

Email: info@creative-biomart.com Fax: 1-631-938-8127

45-1 Ramsey Road, Shirley, NY 11967, USA



**Biological Activity of
Spike-251V**



Tel: 1-631-559-9269 1-516-512-3133

Email: info@creative-biomart.com Fax: 1-631-938-8127

45-1 Ramsey Road, Shirley, NY 11967, USA