

## Recombinant HCoV-OC43 Spike protein, His/SUMO-tagged

**Cat. No.** Spike-255V    **Lot. No.** (See product label)

### SPECIFICATION

<b>Product Overview</b>	Recombinant HCoV-OC43 Spike protein(15-344aa) was fused to His/SUMO-tagged at N-terminus and expressed in E. coli.
<b>Species</b>	HCoV-OC43
<b>Source</b>	E.coli
<b>ProteinLength</b>	Partial
<b>Form</b>	If the delivery form is liquid, the default storage buffer is Tris/PBS-based buffer, 5%-50% glycerol. If the delivery form is lyophilized powder, the buffer before lyophilization is Tris/PBS-based buffer, 6% Trehalose, pH 8.0.
<b>Molecular Mass</b>	53.6 kDa
<b>AA Sequence</b>	VIGDLKCTSDNINDKDTGPPPISTDTVDVTNGLGTYVLDREVLYLNTTLFLNGYYPTSG STYRNMALKGSVLLSRLWFKPPFLSDFINGIFAKVKNTKVIKDRVMYSEFPAITIGSTF VNTSYSVVVQPRINSTQDGDNKLQGLLEVSVQCYNMCEYPQTICHPNLGNHRKEL WHLDTGVVSCLYKRNFYTDVNADYLYHFHYQEGGTFYAYFTDTGVVTKFLFNYYLG MALSHYYVMPLTCNSKLTLEYWVTPLTSRQYLLAFNQDGIIFNAEDCMSDFMSEIKC KTQSIAPPTGVYELNGYTVQPIADVYRRKPNLPNCNIEAWLNDK
<b>Purity</b>	Greater than 90% as determined by SDS-PAGE.
<b>Notes</b>	Repeated freezing and thawing is not recommended. Store working aliquots at 4°C

 Tel: 1-631-559-9269    1-516-512-3133

 Email: [info@creative-biomart.com](mailto:info@creative-biomart.com)     Fax: 1-631-938-8127

 45-1 Ramsey Road, Shirley, NY 11967, USA

for up to one week.

**Storage**

Store at -20°C upon receipt, aliquoting is necessary for multiple use. Avoid repeated freeze-thaw cycles.

**Reconstitution**

It is recommended that sterile water be added to the vial to prepare a stock solution of 0.2 mg/ml. Centrifuge the vial at 4°C before opening to recover the entire contents.

## GENE INFORMATION

**Gene Name**

S

**Official Symbol**

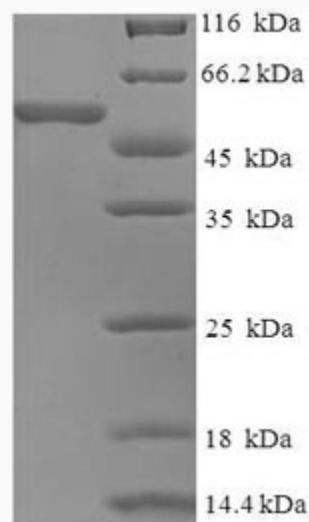
S

**Synonyms**

S; 3Spike glycoprotein; S glycoprotein; E2; Peplomer protein) [Cleaved into: Spike protein S1; Spike protein S2; Spike protein S2']

**UniProt ID**

P36334

**SDS-PAGE of Spike-255V**


 Tel: 1-631-559-9269 1-516-512-3133

 Email: [info@creative-biomart.com](mailto:info@creative-biomart.com)  Fax: 1-631-938-8127

 45-1 Ramsey Road, Shirley, NY 11967, USA