

Recombinant COVID-19 Spike protein, Fc-Avi-tagged

Cat. No. Spike-3411V Lot. No. (See product label)

SPECIFICATION

Product Overview	2019-nCoV Spike S1 is expressed from mammalian with a Fc tag and Avi at the C-terminal. It contains Gln 14-Arg 683.
Species	Sars-CoV-2
Source	HEK293
ProteinLength	Gln 14-Arg 683
Description	The spike protein (S) of coronavirus (CoV) attaches the virus to its cellular receptor, angiotensin converting enzyme 2 (ACE2). A defined receptor-binding domain (RBD) on S mediates this interaction. The S protein plays key parts in the induction of neutralizing-antibody and T-cell responses, as well as protective immunity.
Form	Supplied as 0.22um filtered solution in PBS (pH 7.4).
Molecular Mass	The protein has a predicted MW of 102.6 kDa. Due to glycosylation, the protein migrates to 130-140KDa based on Bis-Tris PAGE result.
Endotoxin	Less than 1EU per ug by the LAL method.
Purity	> 95% as determined by Bis-Tris PAGE; > 95% as determined by HPLC
Storage	The product should be stored at -70°C. Please do not repeated freeze-thaw cycles.

 Tel: 1-631-559-9269 1-516-512-3133

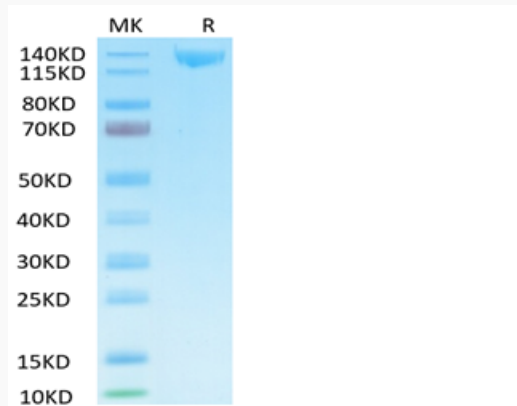
 Email: info@creative-biomart.com  Fax: 1-631-938-8127

 45-1 Ramsey Road, Shirley, NY 11967, USA

GENE INFORMATION

Gene Name	S
Official Symbol	S
Synonyms	S1 protein, Spike glycoprotein Subunit1, S glycoprotein Subunit1, Spike protein S1
Gene ID	43740568
Protein Refseq	YP_009724390.1
UniProt ID	P0DTC2

**Tris-Bis PAGE of
Spike-3411V**

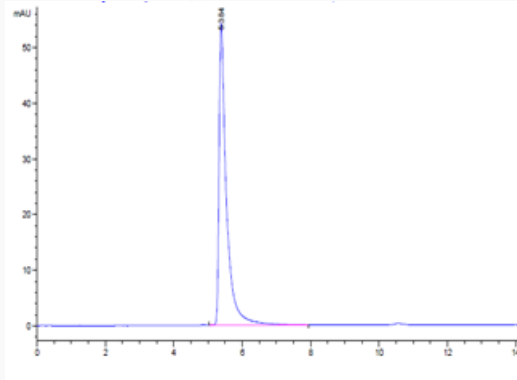


 Tel: 1-631-559-9269 1-516-512-3133

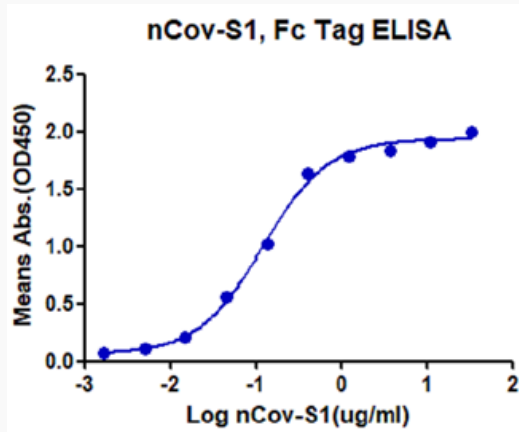
 Email: info@creative-biomart.com  Fax: 1-631-938-8127

 45-1 Ramsey Road, Shirley, NY 11967, USA

SEC-HPLC of Spike-3411V



ELISA data of Spike-3411V



 Tel: 1-631-559-9269 1-516-512-3133

 Email: info@creative-biomart.com  Fax: 1-631-938-8127

 45-1 Ramsey Road, Shirley, NY 11967, USA