

Recombinant HCoV-229E Spike Protein, His-tagged

Cat. No. Spike-351V **Lot. No.** (See product label)

SPECIFICATION

Product Overview	HCoV-229E S1 protein, His Tag is expressed from human 293 cells (HEK293). It contains AA Cys 16 - Ala 536 (Accession # P15423-1).
Species	HCoV
Source	HEK293
ProteinLength	Cys 16 - Ala 536
Description	It's been reported that Coronavirus can infect the human respiratory epithelial cells through interaction with the human ACE2 receptor. The spike protein is a large type I transmembrane protein containing two subunits, S1 and S2. S1 mainly contains a receptor binding domain (RBD), which is responsible for recognizing the cell surface receptor. S2 contains basic elements needed for the membrane fusion. The S protein plays key parts in the induction of neutralizing-antibody and T-cell responses, as well as protective immunity.
Form	Lyophilized from 0.22 µm filtered solution in PBS, pH7.4, 10% trehalose.
Molecular Mass	The protein has a calculated MW of 58.8 kDa. The protein migrates as 70-110 kDa under reducing (R) condition (SDS-PAGE) due to Glycosylation.
Endotoxin	Less than 1.0 EU per µg by the LAL method.
Purity	>90% as determined by SDS-PAGE.

 Tel: 1-631-559-9269 1-516-512-3133

 Email: info@creative-biomart.com  Fax: 1-631-938-8127

 45-1 Ramsey Road, Shirley, NY 11967, USA

Storage

For long term storage, the product should be stored at lyophilized state at -20°C or lower.

Please avoid repeated freeze-thaw cycles.

This product is stable after storage at:

- 20°C to -70°C for 12 months in lyophilized state;
- 70°C for 3 months under sterile conditions after reconstitution.

Reconstitution

It is recommended that sterile water be added to the vial to prepare a stock solution of 0.2 ug/ul. Centrifuge the vial at 4°C before opening to recover the entire contents.

GENE INFORMATION

Gene Name [S surface glycoprotein \[Human coronavirus 229E \]](#)

Official Symbol [S](#)

Synonyms Spike, S1 protein, Spike glycoprotein Subunit1, S glycoprotein Subunit1, Spike protein S1, COVID-19

Gene ID [918758](#)

Protein Refseq [NP_073551.1](#)

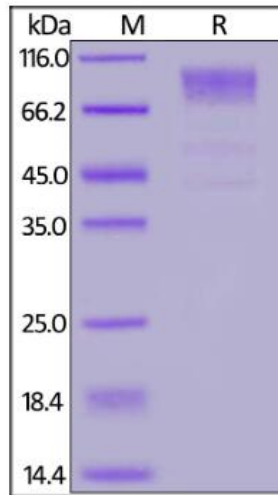
UniProt ID [P15423](#)

 Tel: 1-631-559-9269 1-516-512-3133

 Email: info@creative-biomart.com  Fax: 1-631-938-8127

 45-1 Ramsey Road, Shirley, NY 11967, USA

SDS-PAGE of Spike-351V



 Tel: 1-631-559-9269 1-516-512-3133

 Email: info@creative-biomart.com  Fax: 1-631-938-8127

 45-1 Ramsey Road, Shirley, NY 11967, USA