

Recombinant HCoV-HKU1(isolate N5) Spike Protein, His-tagged

Cat. No. Spike-353V **Lot. No.** (See product label)

SPECIFICATION

Product Overview	HCoV-HKU1(isolate N5) S1 protein, His Tag is expressed from human 293 cells (HEK293). It contains AA Ala 13 - Arg 756 (Accession # Q0ZME7-1).
Species	HCoV-HKU1
Source	HEK293
ProteinLength	Ala 13 - Arg 756
Description	It's been reported that Coronavirus can infect the human respiratory epithelial cells through interaction with the human ACE2 receptor. The spike protein is a large type I transmembrane protein containing two subunits, S1 and S2. S1 mainly contains a receptor binding domain (RBD), which is responsible for recognizing the cell surface receptor. S2 contains basic elements needed for the membrane fusion. The S protein plays key parts in the induction of neutralizing-antibody and T-cell responses, as well as protective immunity.
Form	Lyophilized from 0.22 µm filtered solution in PBS, pH7.4, 10% trehalose.
Molecular Mass	The protein has a calculated MW of 85.7 kDa. The protein migrates as 110-130 kDa under reducing (R) condition (SDS-PAGE) due to Glycosylation.
Endotoxin	Less than 1.0 EU per µg by the LAL method.

 Tel: 1-631-559-9269 1-516-512-3133

 Email: info@creative-biomart.com  Fax: 1-631-938-8127

 45-1 Ramsey Road, Shirley, NY 11967, USA

Purity >90% as determined by SDS-PAGE.

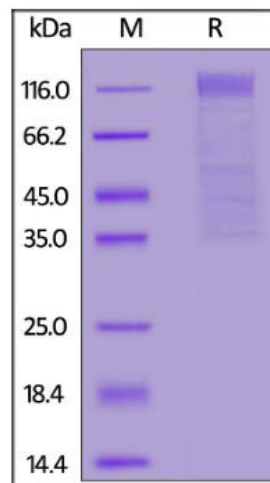
Storage For long term storage, the product should be stored at lyophilized state at -20°C or lower.
Please avoid repeated freeze-thaw cycles.
This product is stable after storage at:
-20°C to -70°C for 12 months in lyophilized state;
-70°C for 3 months under sterile conditions after reconstitution.

Reconstitution It is recommended that sterile water be added to the vial to prepare a stock solution of 0.2 ug/ul. Centrifuge the vial at 4°C before opening to recover the entire contents.

GENE INFORMATION

Synonyms Spike, S1 protein, Spike glycoprotein Subunit1, S glycoprotein Subunit1, Spike protein S1, COVID-19

SDS-PAGE of Spike-353V



Tel: 1-631-559-9269 1-516-512-3133

Email: info@creative-biomart.com Fax: 1-631-938-8127

45-1 Ramsey Road, Shirley, NY 11967, USA