

# Recombinant COVID-19 Spike RBD (V367F) protein, His-tagged

**Cat. No.** Spike-387V    **Lot. No.** (See product label)

## SPECIFICATION

|                         |   |
|-------------------------|---|
| <b>Product Overview</b> | Recombinant COVID-19 Spike RBD (V367F) protein(YP_009724390.1)(Arg 319 - Phe 541), fused to His tag at the C-terminus, was expressed in HEK293.   |
| <b>Species</b>          | Sars-CoV-2  |
| <b>Source</b>           | HEK293  |
| <b>ProteinLength</b>    | Arg 319 - Phe 541   |
| <b>Description</b>      | It's been reported that SARS-CoV-2 can infect the human respiratory epithelial cells through interaction with the human ACE2 receptor. The spike protein is a large type I transmembrane protein containing two subunits, S1 and S2. S1 mainly contains a receptor binding domain (RBD), which is responsible for recognizing the cell surface receptor. S2 contains basic elements needed for the membrane fusion. The S protein plays key parts in the induction of neutralizing-antibody and T-cell responses, as well as protective immunity. |
| <b>Form</b>             | Lyophilized from 0.22 µm filtered solution in PBS, pH7.4. Normally trehalose is added as protectant before lyophilization.  |
| <b>Molecular Mass</b>   | The protein has a calculated MW of 27.0 kDa. The protein migrates as 33-35 kDa under reducing (R) condition (SDS-PAGE) due to glycosylation.  |
| <b>Endotoxin</b>        | Less than 1.0 EU per µg by the LAL method.  |

 Tel: 1-631-559-9269    1-516-512-3133

 Email: [info@creative-biomart.com](mailto:info@creative-biomart.com)     Fax: 1-631-938-8127

 45-1 Ramsey Road, Shirley, NY 11967, USA

|                       |  |
|-----------------------|--|
| <b>Purity</b>         | >95% as determined by SDS-PAGE.  |
| <b>Storage</b>        | <p>For long term storage, the product should be stored at lyophilized state at -20°C or lower.</p> <p>Please avoid repeated freeze-thaw cycles.</p> <p>This product is stable after storage at:</p> <p>-20°C to -70°C for 12 months in lyophilized state;<br/>         -70°C for 3 months under sterile conditions after reconstitution.</p> |
| <b>Reconstitution</b> | It is recommended that sterile water be added to the vial to prepare a stock solution of 0.25 ug/ul. Centrifuge the vial at 4°C before opening to recover the entire contents.   |

## GENE INFORMATION

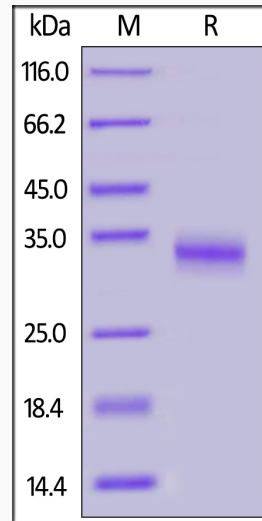
|                        |   |
|------------------------|---|
| <b>Gene Name</b>       | S surface glycoprotein [ Severe acute respiratory syndrome coronavirus 2 ]  |
| <b>Official Symbol</b> | S   |
| <b>Synonyms</b>        | Spike; S protein RBD; Spike glycoprotein Receptor-binding domain; S glycoprotein RBD; Spike protein RBD; COVID-19 |
| <b>Gene ID</b>         | 43740568  |
| <b>Protein Refseq</b>  | YP_009724390.1  |
| <b>UniProt ID</b>      | P0DTC2  |

 Tel: 1-631-559-9269 1-516-512-3133

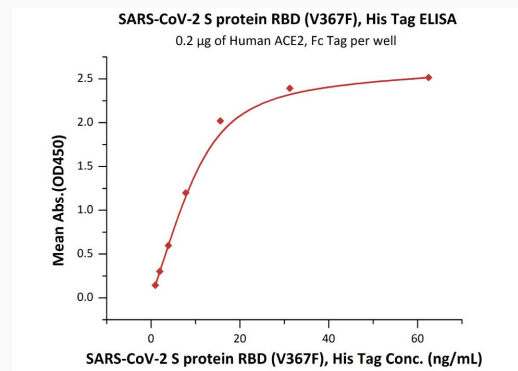
 Email: [info@creative-biomart.com](mailto:info@creative-biomart.com)  Fax: 1-631-938-8127

 45-1 Ramsey Road, Shirley, NY 11967, USA

**SDS-PAGE**



**Bioactivity-ELISA**



Immobilized Human ACE2, Fc Tag at 2 µg/mL (100 µL/well) can bind SARS-CoV-2 S protein RBD (V367F), His Tag with a linear range of 1-16 ng/mL.

Tel: 1-631-559-9269 1-516-512-3133

Email: [info@creative-biomart.com](mailto:info@creative-biomart.com) Fax: 1-631-938-8127

45-1 Ramsey Road, Shirley, NY 11967, USA