

# Recombinant COVID-19 Spike Protein, His-Avi-tagged, Biotinylated

**Cat. No.** Spike-416VB    **Lot. No.** (See product label)

## SPECIFICATION

<b>Product Overview</b>	Biotinylated Recombinant 2019-nCoV Spike S is expressed from mammalian with a His tag and Avi at the C-terminal. It contains Val16-Glu1188.
<b>Species</b>	Sars-CoV-2
<b>Source</b>	HEK293
<b>ProteinLength</b>	Val16-Glu1188
<b>Description</b>	The spike protein (S) of coronavirus (CoV) attaches the virus to its cellular receptor, angiotensin converting enzyme 2 (ACE2). A defined receptor-binding domain (RBD) on S mediates this interaction. The S protein plays key parts in the induction of neutralizing-antibody and T-cell responses, as well as protective immunity.
<b>Form</b>	Supplied as 0.22um filtered solution in PBS (pH 7.4).
<b>Molecular Mass</b>	The protein has a predicted MW of 136.6 kDa. Due to glycosylation, the protein migrates to 175-230kDa based on Bis-Tris PAGE result.
<b>Endotoxin</b>	Less than 1EU per ug by the LAL method.
<b>Purity</b>	> 95% as determined by Bis-Tris PAGE
<b>Storage</b>	The product should be stored at -70°C. Please do not repeated freeze-thaw cycles.

 Tel: 1-631-559-9269    1-516-512-3133

 Email: [info@creative-biomart.com](mailto:info@creative-biomart.com)     Fax: 1-631-938-8127

 45-1 Ramsey Road, Shirley, NY 11967, USA

**Conjugation**                      Biotin

## GENE INFORMATION

**Gene Name**                      S

**Official Symbol**                S

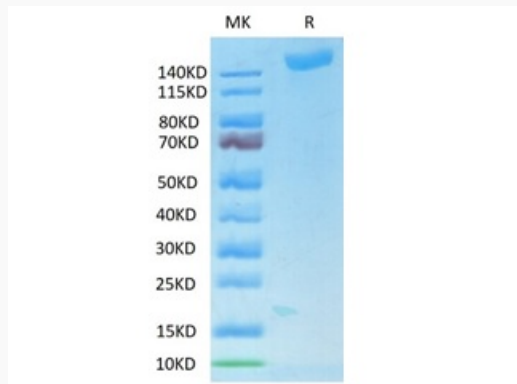
**Synonyms**                      S protein, Spike glycoprotein, S glycoprotein, COVID-19

**Gene ID**                         43740568

**Protein Refseq**                YP\_009724390.1

**UniProt ID**                      P0DTC2

**Tris-Bis PAGE of  
Spike-416VB**

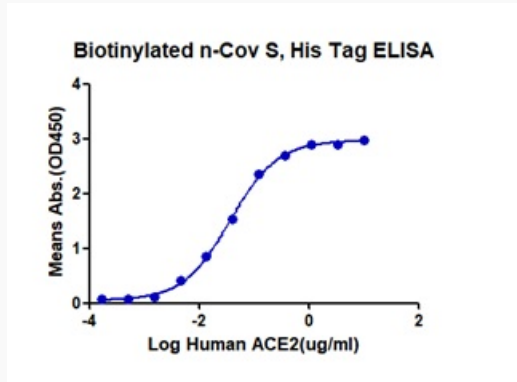


 Tel: 1-631-559-9269    1-516-512-3133

 Email: [info@creative-biomart.com](mailto:info@creative-biomart.com)     Fax: 1-631-938-8127

 45-1 Ramsey Road, Shirley, NY 11967, USA

ELISA data of Spike-416VB



 Tel: 1-631-559-9269 1-516-512-3133

 Email: [info@creative-biomart.com](mailto:info@creative-biomart.com)  Fax: 1-631-938-8127

 45-1 Ramsey Road, Shirley, NY 11967, USA