

# Recombinant COVID-19 Spike S Trimer protein, monomeric hFc-tagged

Cat. No. Spike-5746V Lot. No. (See product label)

## SPECIFICATION

<b>Product Overview</b>	Recombinant COVID-19 Spike S Trimer protein(QHD43416.1)(Val16-Glu1188), fused with C-terminal monomeric hFc tag, was expressed in HEK293.
<b>Species</b>	Sars-CoV-2
<b>Source</b>	HEK293
<b>ProteinLength</b>	Val16-Glu1188
<b>Tag</b>	C-monomeric hFc
<b>Form</b>	Supplied as 0.22µm filtered solution in PBS (pH 7.4).
<b>Bio-activity</b>	Immobilized Human ACE2, His Tag at 5µg/ml (100µl/well) on the plate. Dose response curve for SARS-COV-2 Spike S (Trimer) , hFc Tag with the EC50 of 0.22µg/ml determined by ELISA.
<b>Molecular Mass</b>	The protein has a predicted MW of 158.3 kDa. Due to glycosylation, the protein migrates to 230-250 kDa based on Tris-Bis PAGE result.
<b>Endotoxin</b>	Less than 1EU per µg by the LAL method.
<b>Purity</b>	> 95% as determined by Tris-Bis PAGE;> 95% as determined by HPLC

 Tel: 1-631-559-9269 1-516-512-3133

 Email: [info@creative-biomart.com](mailto:info@creative-biomart.com)  Fax: 1-631-938-8127

 45-1 Ramsey Road, Shirley, NY 11967, USA

**Storage** Valid for 12 months from date of receipt when stored at -80°C; Recommend to aliquot the protein into smaller quantities for optimal storage. Please do not repeated freeze-thaw cycles.

**Reconstitution** It is recommended that sterile water be added to the vial to prepare a stock solution of 0.2 ug/ul. Centrifuge the vial at 4°C before opening to recover the entire contents.

## GENE INFORMATION

**Gene Name** [S spike protein \[ Middle East respiratory syndrome-related coronavirus \]](#)

**Official Symbol** [S](#)

**Synonyms** Spike; S1 protein; Spike glycoprotein Subunit1; S glycoprotein Subunit1; Spike protein S1

**Gene ID** [14254594](#)

**Protein Refseq** [YP\\_009724390.1](#)

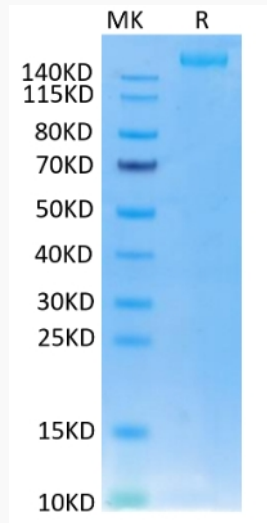
**UniProt ID** [P0DTC2](#)

 Tel: 1-631-559-9269 1-516-512-3133

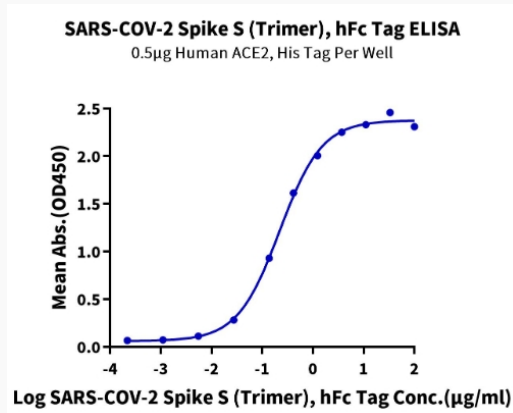
 Email: [info@creative-biomart.com](mailto:info@creative-biomart.com)  Fax: 1-631-938-8127

 45-1 Ramsey Road, Shirley, NY 11967, USA

**Tris-Bis PAGE**



**ELISA Data**



Tel: 1-631-559-9269 1-516-512-3133

Email: [info@creative-biomart.com](mailto:info@creative-biomart.com) Fax: 1-631-938-8127

45-1 Ramsey Road, Shirley, NY 11967, USA