

Recombinant COVID-19 Spike S Trimer (D614G) protein, His-Avi-tagged

Cat. No. Spike-5752V **Lot. No.** (See product label)

SPECIFICATION

Product Overview	Recombinant COVID-19 Spike S Trimer (D614G) protein(QHD43416.1)(Val16-Glu1188(D614G)), fused with C-terminal His and Avi tag, was expressed in HEK293.
Species	Sars-CoV-2
Source	HEK293
ProteinLength	Val16-Glu1188(D614G)
Tag	C-His-Avi
Form	Lyophilized from 0.22µm filtered solution in PBS (pH 7.4). Normally 8% trehalose is added as protectant before lyophilization.
Bio-activity	Immobilized SARS-COV-2 Spike S Trimer (D614G), His Tag at 1µg/ml (100µl/well) on the plate. Dose response curve for Human ACE2, hFc Tag with the EC50 of 14.0ng/ml determined by ELISA.
Molecular Mass	The protein has a predicted MW of 136.7 kDa. Due to glycosylation, the protein migrates to 175-230 kDa based on Tris-Bis PAGE result.
Endotoxin	Less than 1EU per µg by the LAL method.
Purity	> 95% as determined by Tris-Bis PAGE;> 95% as determined by HPLC

 Tel: 1-631-559-9269 1-516-512-3133

 Email: info@creative-biomart.com  Fax: 1-631-938-8127

 45-1 Ramsey Road, Shirley, NY 11967, USA

Storage Reconstituted protein stable at -80°C for 12 months, 4°C for 1 week. Use a manual defrost freezer and avoid repeated freeze-thaw cycles.

Reconstitution Centrifuge tubes before opening. Reconstituting to a concentration more than 100 µg/ml is recommended. Dissolve the lyophilized protein in distilled water.

GENE INFORMATION

Gene Name [S spike protein \[Middle East respiratory syndrome-related coronavirus \]](#)

Official Symbol [S](#)

Synonyms Spike; S1 protein; Spike glycoprotein Subunit1; S glycoprotein Subunit1; Spike protein S1

Gene ID [14254594](#)

Protein Refseq [YP_009724390.1](#)

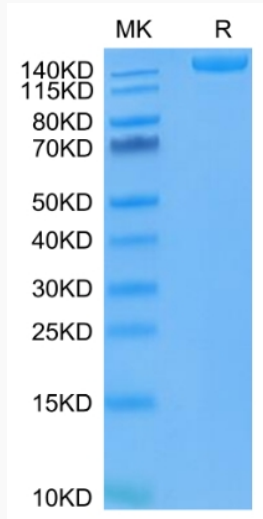
UniProt ID [P0DTC2](#)

 Tel: 1-631-559-9269 1-516-512-3133

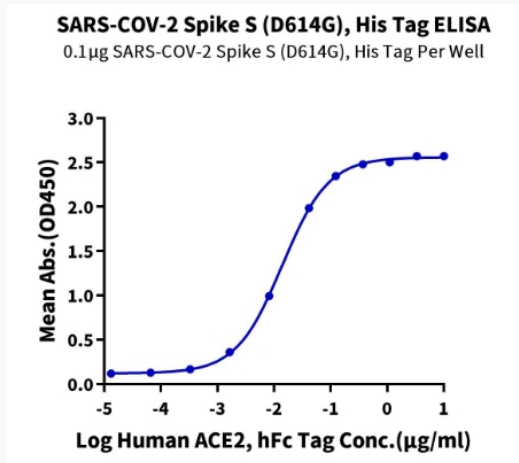
 Email: info@creative-biomart.com  Fax: 1-631-938-8127

 45-1 Ramsey Road, Shirley, NY 11967, USA

Tris-Bis PAGE



ELISA Data



 Tel: 1-631-559-9269 1-516-512-3133

 Email: info@creative-biomart.com  Fax: 1-631-938-8127

 45-1 Ramsey Road, Shirley, NY 11967, USA