

Recombinant COVID-19 Spike S1 (N501Y) protein, His-tagged

Cat. No. Spike-5753V Lot. No. (See product label)

SPECIFICATION

Product Overview	Recombinant COVID-19 Spike S1 (N501Y) protein(YP_009724390.1)(Val16-Arg685), fused with C-terminal His tag, was expressed in HEK293.
Species	Sars-CoV-2
Source	HEK293
ProteinLength	Val16-Arg685
Tag	C-His
Form	Lyophilized from 0.22µm filtered solution in PBS (pH 7.4). Normally 5% trehalose is added as protectant before lyophilization.
Bio-activity	Immobilized SARS-COV-2 Spike S1 (N501Y) , His Tag at 0.5µg/ml (100µl/Well) on the plate. Dose response curve for Human ACE2, hFc Tag with the EC50 of 66.2ng/ml determined by ELISA.
Molecular Mass	The protein has a predicted MW of 76 kDa. Due to glycosylation, the protein migrates to 115-140 kDa based on Tris-Bis PAGE result.
Endotoxin	Less than 1EU per µg by the LAL method.
Purity	> 95% as determined by Tris-Bis PAGE;> 95% as determined by HPLC

 Tel: 1-631-559-9269 1-516-512-3133

 Email: info@creative-biomart.com  Fax: 1-631-938-8127

 45-1 Ramsey Road, Shirley, NY 11967, USA

Storage Reconstituted protein stable at -80°C for 12 months, 4°C for 1 week. Use a manual defrost freezer and avoid repeated freeze-thaw cycles.

Reconstitution Centrifuge tubes before opening. Reconstituting to a concentration more than 100 µg/ml is recommended. Dissolve the lyophilized protein in distilled water.

GENE INFORMATION

Gene Name [S spike protein \[Middle East respiratory syndrome-related coronavirus \]](#)

Official Symbol [S](#)

Synonyms Spike; S1 protein; Spike glycoprotein Subunit1; S glycoprotein Subunit1; Spike protein S1

Gene ID [14254594](#)

Protein Refseq [YP_009724390.1](#)

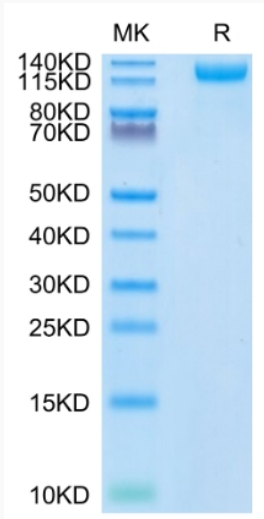
UniProt ID [P0DTC2](#)

 Tel: 1-631-559-9269 1-516-512-3133

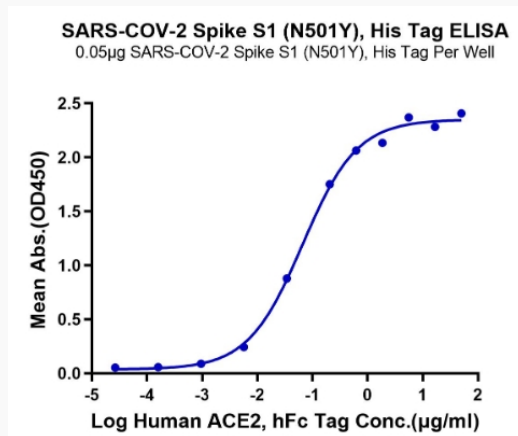
 Email: info@creative-biomart.com  Fax: 1-631-938-8127

 45-1 Ramsey Road, Shirley, NY 11967, USA

Tris-Bis PAGE



ELISA Data



 Tel: 1-631-559-9269 1-516-512-3133

 Email: info@creative-biomart.com  Fax: 1-631-938-8127

 45-1 Ramsey Road, Shirley, NY 11967, USA