

Active Recombinant COVID-19 Spike RBD protein(BA.4&BA.5/Omicron), His-tagged

Cat. No. Spike-710V Lot. No. (See product label)

SPECIFICATION

Product Overview	Recombinant COVID-19 Spike RBD protein(BA.4&BA.5/Omicron)(Arg 319 - Lys 537)(Accession # QHD43416.1(G339D, S371F, S373P, S375F, T376A, D405N, R408S, K417N, N440K, L452R, S477N, T478K, E484A, F486V, Q498R, N501Y, Y505H)), fused with His tag at the C-terminus, was expressed in HEK293.
Species	Sars-CoV-2
Source	HEK293
ProteinLength	Arg 319 - Lys 537
Form	Lyophilized from 0.22 µm filtered solution in PBS, pH7.4 . Normally trehalose is added as protectant before lyophilization.
Bio-activity	Immobilized Human ACE2, Fc Tag at 5 µg/mL (100 µL/well) can bind SARS-CoV-2 Spike RBD, His Tag (BA.4&BA.5/Omicron) with a linear range of 16-125 ng/mL.
Molecular Mass	The protein has a calculated MW of 26.7 kDa. The protein migrates as 33-36 kDa under reducing (R) condition (SDS-PAGE) due to glycosylation.
Endotoxin	Less than 1.0 EU per µg by the LAL method.
Purity	>95% as determined by SDS-PAGE. >90% as determined by SEC-MALS.

 Tel: 1-631-559-9269 1-516-512-3133

 Email: info@creative-biomart.com  Fax: 1-631-938-8127

 45-1 Ramsey Road, Shirley, NY 11967, USA

Storage This product is stable after storage at:
-20°C to -70°C for 12 months in lyophilized state;
-70°C for 3 months under sterile conditions after reconstitution.

Reconstitution It is recommended that sterile water be added to the vial to prepare a stock solution of 0.2 ug/ul. Centrifuge the vial at 4°C before opening to recover the entire contents.

GENE INFORMATION

Gene Name [S surface glycoprotein \[Severe acute respiratory syndrome coronavirus 2 \]](#)

Official Symbol [Spike](#)

Synonyms Spike; S1 protein; Spike glycoprotein Subunit1; S glycoprotein Subunit1; Spike protein S1; COVID-19 Omicron

Gene ID [43740568](#)

Protein Refseq [YP_009724390.1](#)

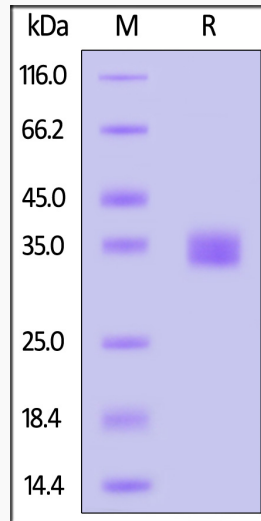
UniProt ID [P0DTC2](#)

 Tel: 1-631-559-9269 1-516-512-3133

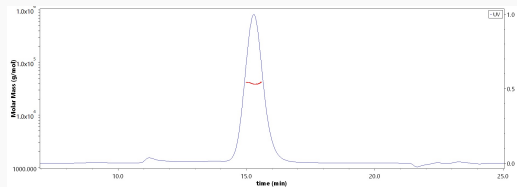
 Email: info@creative-biomart.com  Fax: 1-631-938-8127

 45-1 Ramsey Road, Shirley, NY 11967, USA

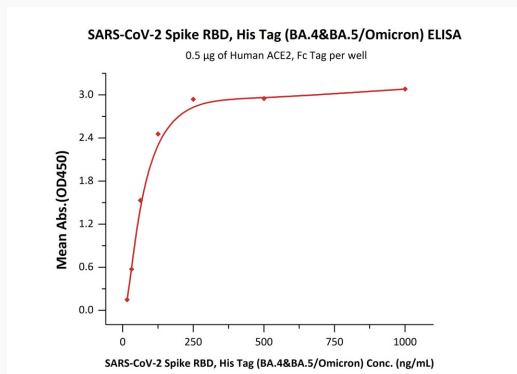
SDS-PAGE



SEC-MALS



Bioactivity-ELISA



Tel: 1-631-559-9269 1-516-512-3133

Email: info@creative-biomart.com Fax: 1-631-938-8127

45-1 Ramsey Road, Shirley, NY 11967, USA