

Active Recombinant COVID-19 Spike S1 protein(XD/BA.1 x AY.4), His-tagged

Cat. No. Spike-725V **Lot. No.** (See product label)

SPECIFICATION

Product Overview	Recombinant COVID-19 Spike S1 protein(XD/BA.1 x AY.4)(Val 16 - Arg 685)(Accession # QHD43416.1(T19R, A27S, T95I, G142D, EFR156G, NL211I, INS214EPE, G339D, S371L, S373P, S375F, K417N, N440K, G446S, S477N, T478K, E484A, Q493R, G496S, Q498R, N501Y, Y505H, T547K, D614G, H655Y, N679K, P681H)), fused with His tag at the C-terminus, was expressed in HEK293.
Species	Sars-CoV-2
Source	HEK293
ProteinLength	Val 16 - Arg 685
Form	Lyophilized from 0.22 µm filtered solution in PBS, pH7.4 . Normally trehalose is added as protectant before lyophilization.
Bio-activity	Immobilized SARS-CoV-2 Spike S1, His Tag (XD/BA.1 x AY.4 recombinant) at 2 µg/mL (100 µL/well) can bind Human ACE2, Fc Tag with a linear range of 1-125 ng/mL.
Molecular Mass	The protein has a calculated MW of 77.2 kDa. The protein migrates as 100-110 kDa under reducing (R) condition (SDS-PAGE) due to glycosylation.
Endotoxin	Less than 1.0 EU per µg by the LAL method.

 Tel: 1-631-559-9269 1-516-512-3133

 Email: info@creative-biomart.com  Fax: 1-631-938-8127

 45-1 Ramsey Road, Shirley, NY 11967, USA

Purity	>95% as determined by SDS-PAGE. >90% as determined by SEC-MALS.
Storage	This product is stable after storage at: -20°C to -70°C for 12 months in lyophilized state; -70°C for 3 months under sterile conditions after reconstitution.
Reconstitution	It is recommended that sterile water be added to the vial to prepare a stock solution of 0.2 ug/ul. Centrifuge the vial at 4°C before opening to recover the entire contents.

GENE INFORMATION

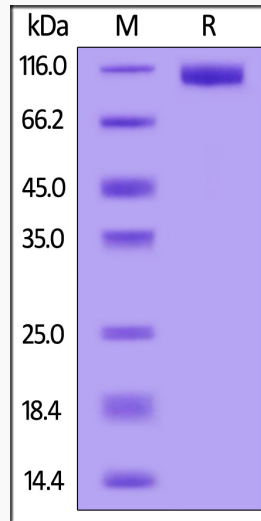
Gene Name	S surface glycoprotein [Severe acute respiratory syndrome coronavirus 2]
Official Symbol	Spike
Synonyms	Spike; S1 protein; Spike glycoprotein Subunit1; S glycoprotein Subunit1; Spike protein S1; COVID-19 Omicron
Gene ID	43740568
Protein Refseq	YP_009724390.1
UniProt ID	P0DTC2

 Tel: 1-631-559-9269 1-516-512-3133

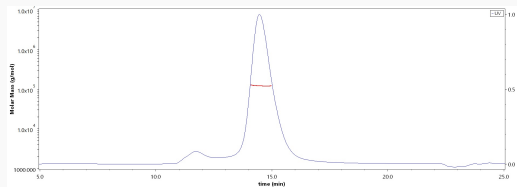
 Email: info@creative-biomart.com  Fax: 1-631-938-8127

 45-1 Ramsey Road, Shirley, NY 11967, USA

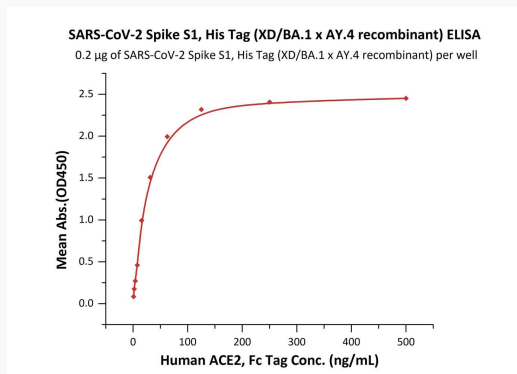
SDS-PAGE



SEC-MALS



Bioactivity-ELISA



Tel: 1-631-559-9269 1-516-512-3133

Email: info@creative-biomart.com Fax: 1-631-938-8127

45-1 Ramsey Road, Shirley, NY 11967, USA