

Active Recombinant COVID-19 Spike Trimer protein(BA.3/Omicron), His-tagged

Cat. No. Spike-733V **Lot. No.** (See product label)

SPECIFICATION

Product Overview	Recombinant COVID-19 Spike Trimer protein(BA.3/Omicron)(Pango lineage: BA.3; GISAID clade: GRA; Nextstrain clade: 21M), fused with His tag at the C-terminus, was expressed in HEK293.
Species	Sars-CoV-2
Source	HEK293
Form	Supplied as 0.2 µm filtered solution in PBS.
Bio-activity	Immobilized SARS-CoV-2 Spike Trimer, His Tag (BA.3/Omicron) at 1 µg/mL (100 µL/well) can bind Human ACE2, Fc Tag with a linear range of 2-31 ng/mL.
Molecular Mass	The protein has a calculated MW of 137.8 kDa. The protein migrates as 160-200 kDa under reducing (R) condition (SDS-PAGE) due to glycosylation.
Endotoxin	Less than 1.0 EU per µg by the LAL method.
Purity	>95% as determined by SDS-PAGE. >90% as determined by SEC-MALS.
Storage	This product is stable after storage at: -20°C to -70°C for 12 months in lyophilized state; -70°C for 3 months under sterile conditions after reconstitution.

 Tel: 1-631-559-9269 1-516-512-3133

 Email: info@creative-biomart.com  Fax: 1-631-938-8127

 45-1 Ramsey Road, Shirley, NY 11967, USA

Reconstitution It is recommended that sterile water be added to the vial to prepare a stock solution of 0.2 ug/ul. Centrifuge the vial at 4°C before opening to recover the entire contents.

GENE INFORMATION

Gene Name [S surface glycoprotein \[Severe acute respiratory syndrome coronavirus 2 \]](#)

Official Symbol [Spike](#)

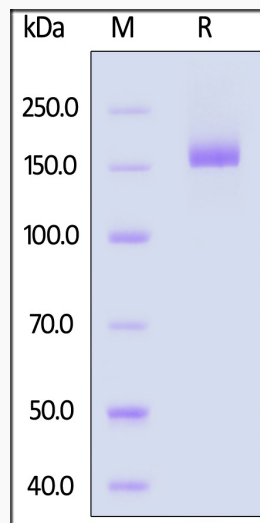
Synonyms Spike; S1 protein; Spike glycoprotein Subunit1; S glycoprotein Subunit1; Spike protein S1; COVID-19 Omicron

Gene ID [43740568](#)

Protein Refseq [YP_009724390.1](#)

UniProt ID [P0DTC2](#)

SDS-PAGE

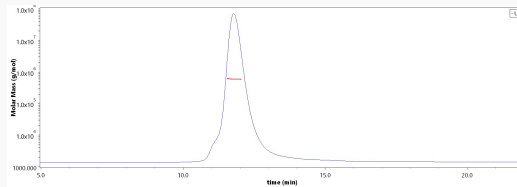


 Tel: 1-631-559-9269 1-516-512-3133

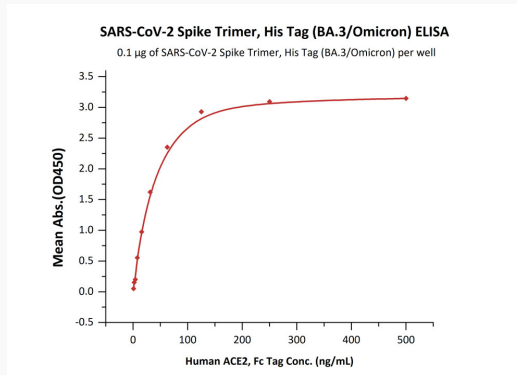
 Email: info@creative-biomart.com  Fax: 1-631-938-8127

 45-1 Ramsey Road, Shirley, NY 11967, USA

SEC-MALS



Bioactivity-ELISA



 Tel: 1-631-559-9269 1-516-512-3133

 Email: info@creative-biomart.com  Fax: 1-631-938-8127

 45-1 Ramsey Road, Shirley, NY 11967, USA