

Active Recombinant COVID-19 Spike RBD protein(BA.2/Omicron), His-tagged

Cat. No. Spike-735V Lot. No. (See product label)

SPECIFICATION

Product Overview	Recombinant COVID-19 Spike RBD protein(BA.2/Omicron)(Arg 319 - Lys 537) (Accession # QHD43416.1 (G339D, S371F, S373P, S375F, T376A, D405N, R408S, K417N, N440K, S477N, T478K, E484A, Q493R, Q498R, N501Y, Y505H), fused with His tag at the C-terminus, was expressed in HEK293.
Species	Sars-CoV-2
Source	HEK293
ProteinLength	Arg 319 - Lys 537
Form	Lyophilized from 0.22 µm filtered solution in PBS, pH7.4. Normally trehalose is added as protectant before lyophilization.
Bio-activity	Immobilized SARS-CoV-2 Spike RBD, His Tag (BA.2/Omicron) at 1 µg/mL (100 µL/well) can bind Anti-SARS-CoV-2 Spike RBD Antibody, Chimeric mAb, Human IgG1 with a linear range of 0.8-13 ng/mL.
Molecular Mass	The protein has a calculated MW of 26.7 kDa. The protein migrates as 33-40 kDa under reducing (R) condition (SDS-PAGE) due to glycosylation.
Endotoxin	Less than 1.0 EU per µg by the LAL method.
Purity	>95% as determined by SDS-PAGE.

 Tel: 1-631-559-9269 1-516-512-3133

 Email: info@creative-biomart.com  Fax: 1-631-938-8127

 45-1 Ramsey Road, Shirley, NY 11967, USA

>90% as determined by SEC-MALS.

Storage

This product is stable after storage at:
 -20°C to -70°C for 12 months in lyophilized state;
 -70°C for 3 months under sterile conditions after reconstitution.

Reconstitution

It is recommended that sterile water be added to the vial to prepare a stock solution of 0.2 ug/ul. Centrifuge the vial at 4°C before opening to recover the entire contents.

GENE INFORMATION

Gene Name

S surface glycoprotein [Severe acute respiratory syndrome coronavirus 2]

Official Symbol

Spike

Synonyms

Spike; S1 protein; Spike glycoprotein Subunit1; S glycoprotein Subunit1; Spike protein S1; COVID-19 Omicron

Gene ID

43740568

Protein Refseq

YP_009724390.1

UniProt ID

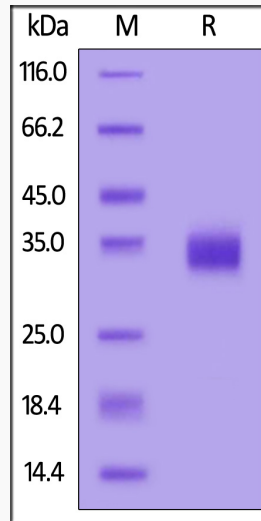
P0DTC2

 Tel: 1-631-559-9269 1-516-512-3133

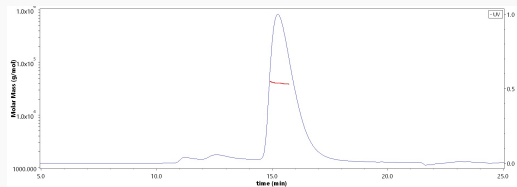
 Email: info@creative-biomart.com  Fax: 1-631-938-8127

 45-1 Ramsey Road, Shirley, NY 11967, USA

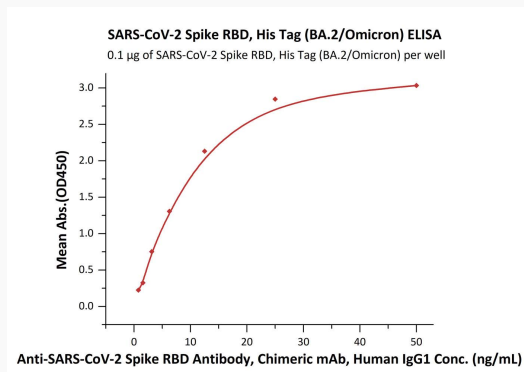
SDS-PAGE



SEC-MALS



Bioactivity-ELISA



Tel: 1-631-559-9269 1-516-512-3133

Email: info@creative-biomart.com Fax: 1-631-938-8127

45-1 Ramsey Road, Shirley, NY 11967, USA