

Recombinant COVID-19 Spike RBD protein, hFc-Avi-tagged, Biotinylated

Cat. No. Spike-7443V **Lot. No.** (See product label)

SPECIFICATION

Product Overview	Biotinylated Recombinant COVID-19 Spike RBD protein(QHD43416.1)(Arg319-Asn532), fused with C-terminal hFc and Avi tag, was expressed in HEK293.
Species	Sars-CoV-2
Source	HEK293
ProteinLength	Arg319-Asn532
Tag	C-hFc-Avi
Conjugation/Label	Biotin
Form	Lyophilized from 0.22µm filtered solution in PBS (pH 7.4). Normally 5% trehalose is added as protectant before lyophilization.
Bio-activity	Immobilized Human ACE2, His Tag at 5µg/ml (100µl/well) on the plate. Dose response curve for Biotinylated SARS-COV-2 Spike RBD, hFc Tag with the EC50 of 16.7ng/ml determined by ELISA.
Molecular Mass	The protein has a predicted MW of 51.7 kDa. Due to glycosylation, the protein migrates to 60-62 kDa based on Tris-Bis PAGE result.
Endotoxin	Less than 1EU per µg by the LAL method.

 Tel: 1-631-559-9269 1-516-512-3133

 Email: info@creative-biomart.com  Fax: 1-631-938-8127

 45-1 Ramsey Road, Shirley, NY 11967, USA

Purity	> 95% as determined by Tris-Bis PAGE;> 95% as determined by HPLC
Storage	Reconstituted protein stable at -80°C for 12 months, 4°C for 1 week. Use a manual defrost freezer and avoid repeated freeze-thaw cycles.
Reconstitution	Centrifuge tubes before opening. Reconstituting to a concentration more than 100 µg/ml is recommended. Dissolve the lyophilized protein in distilled water.
Conjugation	Biotin

GENE INFORMATION

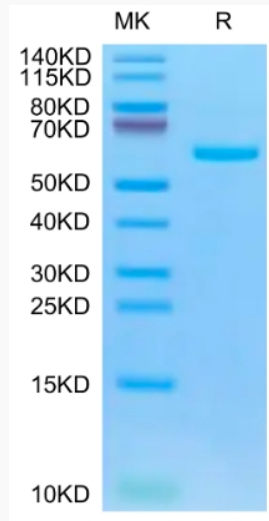
Gene Name	S spike protein [Middle East respiratory syndrome-related coronavirus]
Official Symbol	S
Synonyms	Spike; S1 protein; Spike glycoprotein Subunit1; S glycoprotein Subunit1; Spike protein S1
Gene ID	14254594
Protein Refseq	YP_009724390.1
UniProt ID	P0DTC2

 Tel: 1-631-559-9269 1-516-512-3133

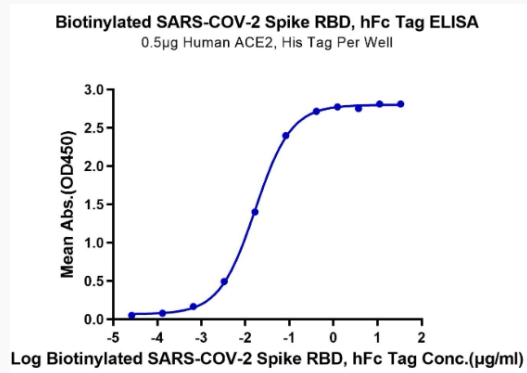
 Email: info@creative-biomart.com  Fax: 1-631-938-8127

 45-1 Ramsey Road, Shirley, NY 11967, USA

Tris-Bis PAGE



ELISA Data



Tel: 1-631-559-9269 1-516-512-3133

Email: info@creative-biomart.com Fax: 1-631-938-8127

45-1 Ramsey Road, Shirley, NY 11967, USA