

Recombinant SARS-CoV-2 spike protein, His-Flag-tagged

Cat. No. Spike-941V Lot. No. (See product label)

SPECIFICATION

Product Overview	Recombinant 2019 nCoV Spike S1 Protein NTD is expressed from Expi293 with a His tag and flag tag at the C-terminal. It contains Ser13-Lys304.
Species	SARS-CoV-2
Source	HEK293
ProteinLength	It contains Ser13-Lys304.
Description	The spike protein (S) of coronavirus (CoV) attaches the virus to its cellular receptor, angiotensin-converting enzyme 2 (ACE2). A defined receptor-binding domain (RBD) on S mediates this interaction. The S protein plays key parts in the induction of neutralizing-antibody and T-cell responses, as well as protective immunity.
Form	Supplied as 0.22um filtered solution in PBS (pH 7.4).
Molecular Mass	The protein has a predicted MW of 35 kDa. Due to glycosylation, the protein migrates to 55-70KDa based on Bis-Tris PAGE result.
Endotoxin	Less than 1EU per ug by the LAL method.
Purity	> 95% as determined by Bis-Tris PAGE; > 95% as determined by HPLC
Storage	The product should be stored at -70°C. Please do not repeated freeze-thaw cycles.

 Tel: 1-631-559-9269 1-516-512-3133

 Email: info@creative-biomart.com  Fax: 1-631-938-8127

 45-1 Ramsey Road, Shirley, NY 11967, USA

Reconstitution It is recommended that sterile water be added to the vial to prepare a stock solution of 0.2 ug/ul. Centrifuge the vial at 4°C before opening to recover the entire contents.

GENE INFORMATION

Gene Name [S surface glycoprotein \[Severe acute respiratory syndrome coronavirus 2 \]](#)

Official Symbol [S](#)

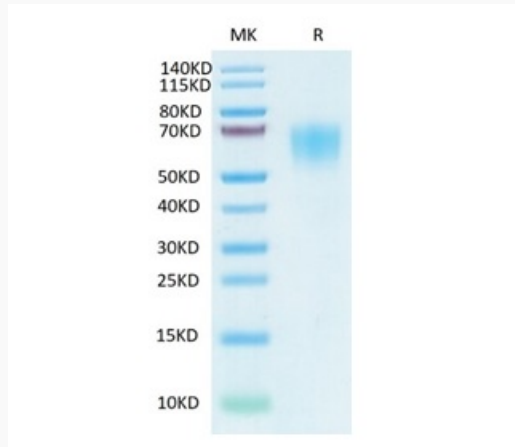
Synonyms S1 protein NTD, Spike glycoprotein Subunit1 NTD, S glycoprotein Subunit1 NTD, Spike protein S1 NTD

Gene ID [43740568](#)

Protein Refseq [YP_009724390.1](#)

UniProt ID [P0DTC2](#)

Tris-Bis PAGE



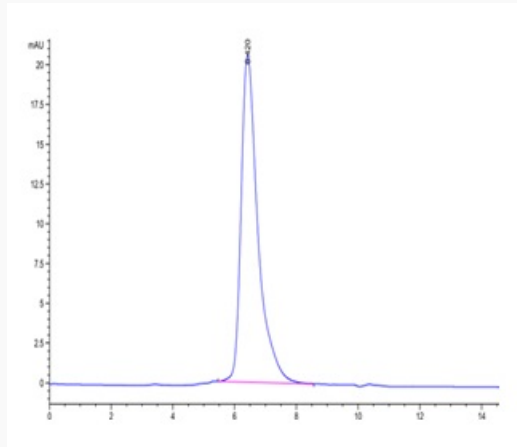
 Tel: 1-631-559-9269 1-516-512-3133

 Email: info@creative-biomart.com  Fax: 1-631-938-8127

 45-1 Ramsey Road, Shirley, NY 11967, USA



HPLC data



Tel: 1-631-559-9269 1-516-512-3133

Email: info@creative-biomart.com Fax: 1-631-938-8127

45-1 Ramsey Road, Shirley, NY 11967, USA