

Recombinant Mouse Spp1 Protein, His&GST-tagged

Cat. No. Spp1-2096M Lot. No. (See product label)

SPECIFICATION

Product Overview	Recombinant Mouse Spp1 Protein (Leu17-Asn294) with N-His&GST tag was expressed in E. coli.
Species	Mouse
Source	E.coli
ProteinLength	Leu17-Asn294
Description	Enables extracellular matrix binding activity. Acts upstream of or within several processes, including cellular ion homeostasis; cellular response to leukemia inhibitory factor; and neutrophil chemotaxis. Located in apical part of cell and cytoplasm. Is expressed in several structures, including alimentary system; brain; metanephros; reproductive system; and skeleton. Human ortholog(s) of this gene implicated in several diseases, including autoimmune disease (multiple); biliary atresia; coronary artery disease (multiple); disease of cellular proliferation (multiple); and hepatitis. Orthologous to human SPP1 (secreted phosphoprotein 1).
Form	Freeze-dried powder
Molecular Mass	Predicted Molecular Mass: 60.7 kDa Accurate Molecular Mass: 91 kDa
Purity	> 90%

 Tel: 1-631-559-9269 1-516-512-3133

 Email: info@creative-biomart.com  Fax: 1-631-938-8127

 45-1 Ramsey Road, Shirley, NY 11967, USA

Applications	Positive Control; Immunogen; SDS-PAGE; WB.
Stability	The thermal stability is described by the loss rate. The loss rate was determined by accelerated thermal degradation test, that is, incubate the protein at 37 centigrade for 48h, and no obvious degradation and precipitation were observed. The loss rate is less than 5% within the expiration date under appropriate storage condition.
Storage	Avoid repeated freeze/thaw cycles. Store at 2-8 centigrade for one month. Aliquot and store at -80 centigrade for 12 months.
Storage Buffer	20mM Tris, 150mM NaCl, pH8.0, containing 1mM EDTA, 1mM DTT, 0.01% SKL, 5% Trehalose and Proclin300.
Reconstitution	Reconstitute in 20mM Tris, 150mM NaCl (pH8.0) to a concentration of 0.1-1.0 mg/mL. Do not vortex.

GENE INFORMATION

Gene Name	Spp1 secreted phosphoprotein 1 [Mus musculus (house mouse)]
Official Symbol	Spp1
Synonyms	Spp1; secreted phosphoprotein 1; OP; 2AR; Bsp; Eta; Opn; Ric; BNSP; BSPI; Opnl; Apl-1; ETA-1; Spp-1; osteopontin; 44 kDa bone phosphoprotein; bone sialoprotein 1; calcium oxalate crystal growth inhibitor protein; early T-lymphocyte activation 1 protein; minopontin; osteopontin-like protein
Gene ID	20750
mRNA Refseq	NM_009263

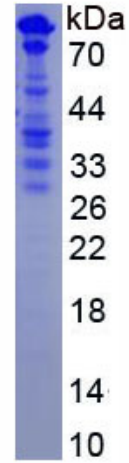
 Tel: 1-631-559-9269 1-516-512-3133

 Email: info@creative-biomart.com  Fax: 1-631-938-8127

 45-1 Ramsey Road, Shirley, NY 11967, USA

Protein Refseq NP_033289

UniProt ID P10923



 Tel: 1-631-559-9269 1-516-512-3133

 Email: info@creative-biomart.com  Fax: 1-631-938-8127

 45-1 Ramsey Road, Shirley, NY 11967, USA