

Recombinant Rat Spp1 protein, His-tagged

Cat. No. Spp1-571R **Lot. No.** (See product label)

SPECIFICATION

Product Overview	Recombinant Rat Spp1 (P08721) aa. (Leu17~Asn317) fused with His tag was produced in HEK293F cells.
Species	Rat
Source	HEK293
ProteinLength	Leu17~Asn317
Description	The sialoprotein that binds osteosarcoma cells; may play a role in osteoclast cell function.
Form	Freeze-dried powder
Molecular Mass	Predicted Molecular Mass: 34.9kDa; Accurate Molecular Mass: 60kDa as determined by SDS-PAGE reducing conditions.
Endotoxin	<1.0EU per 1ug (determined by the LAL method)
Purity	>95%
Characteristic	Isoelectric point is 4.3.
Applications	Cell culture; Activity Assays; In vivo assays.

 Tel: 1-631-559-9269 1-516-512-3133

 Email: info@creative-biomart.com  Fax: 1-631-938-8127

 45-1 Ramsey Road, Shirley, NY 11967, USA

Stability	The thermal stability is described by the loss rate. The loss rate was determined by accelerated thermal degradation test, that is, incubate the protein at 37°C for 48h, and no obvious degradation and precipitation were observed. The loss rate is less than 5% within the expiration date under appropriate storage condition.
Storage	Avoid repeated freeze/thaw cycles. Store at 2-8°C for one month. Aliquot and store at -80°C for 12 months.
Storage buffer	20mM Tris, 150mM NaCl, pH8.0, containing 1mM EDTA, 1mM DTT, 0.01% sarcosyl, 5% Trehalose and Proclin300.
Reconstitution	Reconstitute in 20mM Tris, 150mM NaCl (pH8.0) to a concentration of 0.1-1.0 mg/mL. Do not vortex

GENE INFORMATION

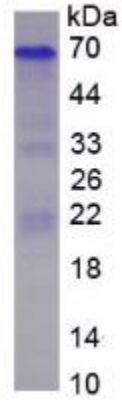
Gene Name	Spp1 secreted phosphoprotein 1 [Rattus norvegicus (Norway rat)]
Official Symbol	Spp1
Synonyms	Spp1; secreted phosphoprotein 1; OSP; osteopontin; SPP-1; Sialoprotein (osteopontin); bone sialoprotein 1; osteopontin-like
Gene ID	25353
mRNA Refseq	NM_012881.2
Protein Refseq	NP_037013.2
UniProt ID	P08721

 Tel: 1-631-559-9269 1-516-512-3133

 Email: info@creative-biomart.com  Fax: 1-631-938-8127

 45-1 Ramsey Road, Shirley, NY 11967, USA

SDS-PAGE



 Tel: 1-631-559-9269 1-516-512-3133

 Email: info@creative-biomart.com  Fax: 1-631-938-8127

 45-1 Ramsey Road, Shirley, NY 11967, USA