

Recombinant Mouse Spp1 protein, His&Myc-tagged

Cat. No. Spp1-6321M Lot. No. (See product label)

SPECIFICATION

Product Overview	Recombinant Mouse Spp1 protein(P10923)(17-290aa), fused with N-terminal His tag and C-terminal Myc tag, was expressed in E.coli.
Species	Mouse
Source	E.coli
ProteinLength	17-290aa
Form	If the delivery form is liquid, the default storage buffer is Tris/PBS-based buffer, 5%-50% glycerol. If the delivery form is lyophilized powder, the buffer before lyophilization is Tris/PBS-based buffer, 6% Trehalose, pH 8.0.
Molecular Mass	37.8 kDa
Purity	Greater than 85% as determined by SDS-PAGE.
Storage	Store at -20°C/-80°C upon receipt, aliquoting is necessary for mutiple use. Avoid repeated freeze-thaw cycles.
Reconstitution	We recommend that this vial be briefly centrifuged prior to opening to bring the contents to the bottom. Please reconstitute protein in deionized sterile water to a concentration of 0.1-1.0 mg/mL. We recommend to add 5-50% of glycerol (final concentration) and aliquot for long-term storage at -20°C/-80°C.

 Tel: 1-631-559-9269 1-516-512-3133

 Email: info@creative-biomart.com  Fax: 1-631-938-8127

 45-1 Ramsey Road, Shirley, NY 11967, USA

AA Sequence

LPVKVTDSGSSEEKLYSLHPDIATWLVPDPSQKQNLLAPQNAVSSEEKDDFKQETL
 PSNSNESHDMDDDDDDDDDDGDHAESEDSVDSDESDESHHSDESDETVTASTQ
 ADTFTPIVPTVDVPNGRGDSLAYGLRSKRSRFQVSDEQYPDATDEDLTSHMKSGES
 KESLDVIPVAQLLSMPDQDNNGKGSHESSQLDEPSLETHRLEHSKESQESADQSD
 VIDSQASSKASLEHQSHKFHSHKDKLVLDPKSKEDDRYLKFRISHELESSS

GENE INFORMATION

Gene Name [Spp1 secreted phosphoprotein 1 \[Mus musculus \]](#)

Official Symbol [Spp1](#)

Synonyms SPP1; secreted phosphoprotein 1; osteopontin; minopontin; bone sialoprotein 1; osteopontin-like protein; 44 kDa bone phosphoprotein; early T-lymphocyte activation 1 protein; calcium oxalate crystal growth inhibitor protein; OP; 2AR; Bsp; Eta; Opn; Ric; BNSP; BSPI; Opnl; Apl-1; ETA-1; Spp-1;

Gene ID [20750](#)

mRNA Refseq [NM_001204201](#)

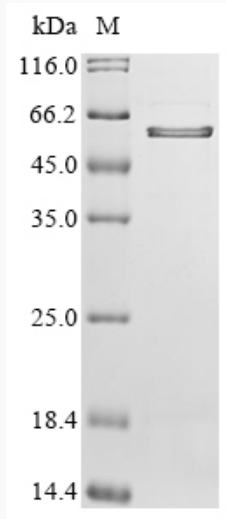
Protein Refseq [NP_001191130](#)

 Tel: 1-631-559-9269 1-516-512-3133

 Email: info@creative-biomart.com  Fax: 1-631-938-8127

 45-1 Ramsey Road, Shirley, NY 11967, USA

SDS-PAGE



 Tel: 1-631-559-9269 1-516-512-3133

 Email: info@creative-biomart.com  Fax: 1-631-938-8127

 45-1 Ramsey Road, Shirley, NY 11967, USA