

Recombinant Mouse Spr Protein, His-tagged

Cat. No. Spr-205M Lot. No. (See product label)

SPECIFICATION

Product Overview	Recombinant Mouse Spr(1-262aa) fused with His tag at N-terminal was expressed in E. coli.
Species	Mouse
Source	E.coli
ProteinLength	1-262aa
Description	Spr also known as Sepiapterin reductase, belongs to the Short-chain dehydrogenase/reductase (Sdr) family and also reduces various exogenous carbonyl compounds including phenylpropanedione. Spr is an essential enzyme for the biosynthesis of tetrahydrobiopterin, an essential cofactor for aromatic amino acid hydrolases including tyrosine hydroxylase, the rate-limiting enzyme in dopamine synthesis. Defects in Spr cause DOPA-responsive dystonia defined by the presence of sustained involuntary muscle contractions, often leading to abnormal postures.
Form	Liquid. In 20mM Tris-HCl buffer (pH8.5) containing 1mM DTT, 10% glycerol
Molecular Mass	30.3kDa (285aa), confirmed by MALDI-TOF
AA Sequence	MGSSHHHHHH SGLVPRGSH MGSMEAGGLG CAVCVLTGAS RGFGRALAPQ LARLLSPGSV MLVSARSESM LRQLKEELGA QQPDLKVVLAADLGTEAGV QRLLSAVREL PRPEGLQRL L INNAATLGD VSKGFLNVND LAEVNNYWAL NLTSMLCLTS GTLNAFQDSP GLSKTVVNISL CALQPYKG WGLYCAGKAA

 Tel: 1-631-559-9269 1-516-512-3133

 Email: info@creative-biomart.com  Fax: 1-631-938-8127

 45-1 Ramsey Road, Shirley, NY 11967, USA



RDMLYQVLAA EEPSVRVLSY APGPLDNDMQ QLARETSKDP ELRSKLQKLIK
SDGALVDCGT SAQKLLGLLQKDTFQSGAHV DFYDC

Purity > 95% by SDS - PAGE

Applications SDS-PAGE

Storage Can be stored at +4 centigrade short term (1-2 weeks). For long term storage, aliquot and store at -20 centigrade or -70 centigrade. Avoid repeated freezing and thawing cycles.

Concentration 1mg/ml (determined by Absorbance at 280nm)

GENE INFORMATION

Gene Name [Spr sepiapterin reductase \[Mus musculus \]](#)

Official Symbol [Spr](#)

Synonyms SPR; sepiapterin reductase; Gm10328; AA409688; ENSMUSG00000071345;

Gene ID [20751](#)

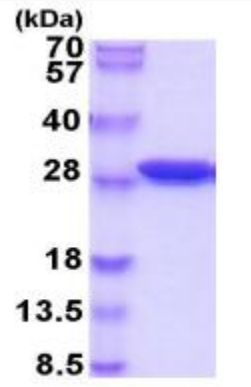
mRNA Refseq [NM_011467](#)

Protein Refseq [NP_035597](#)

Tel: 1-631-559-9269 1-516-512-3133

Email: info@creative-biomart.com Fax: 1-631-938-8127

45-1 Ramsey Road, Shirley, NY 11967, USA



15% SDS-PAGE (3ug)

 Tel: 1-631-559-9269 1-516-512-3133

 Email: info@creative-biomart.com  Fax: 1-631-938-8127

 45-1 Ramsey Road, Shirley, NY 11967, USA