

Recombinant Mouse Spr Protein, His-tagged

Cat. No. Spr-682M Lot. No. (See product label)

SPECIFICATION

Product Overview	Recombinant Mouse Spr(Met1~Asp261) fused with His tag at N-terminal was expressed in E. coli.
Species	Mouse
Source	E.coli
ProteinLength	Met1~Asp261
Form	PBS, pH7.4, containing 0.01% SKL, 1mM DTT, 5% Trehalose and Proclin300.
Molecular Mass	31.6kDa
Endotoxin	<1.0EU per 1g (determined by the LAL method)
Purity	> 98%
Applications	Positive Control; Immunogen; SDS-PAGE; WB. If bio-activity of the protein is needed, please check active protein.
Stability	The thermal stability is described by the loss rate. The loss rate was determined by accelerated thermal degradation test, that is, incubate the protein at 37 centigrade for 48h, and no obvious degradation and precipitation were observed. The loss rate is less than 5% within the expiration date under appropriate storage condition.

 Tel: 1-631-559-9269 1-516-512-3133

 Email: info@creative-biomart.com  Fax: 1-631-938-8127

 45-1 Ramsey Road, Shirley, NY 11967, USA

Storage Avoid repeated freeze/thaw cycles. Store at 2-8 centigrade for one month. Aliquot and store at -80 centigrade for 12 months.

Reconstitution Reconstitute in PBS or others.

GENE INFORMATION

Gene Name Spr sepiapterin reductase [*Mus musculus*]

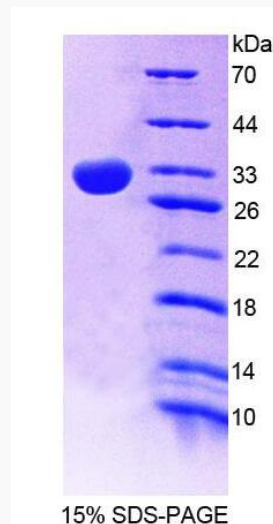
Official Symbol Spr

Synonyms SPR; sepiapterin reductase; Gm10328; AA409688; ENSMUSG00000071345;

Gene ID 20751

mRNA Refseq NM_011467

Protein Refseq NP_035597



 Tel: 1-631-559-9269 1-516-512-3133

 Email: info@creative-biomart.com  Fax: 1-631-938-8127

 45-1 Ramsey Road, Shirley, NY 11967, USA