

Recombinant Mouse Rous Sarcoma Oncogene, Domain

Cat. No. Src-593M Lot. No. (See product label)

SPECIFICATION

Product Overview	Recombinant Mouse Src SH3 domain protein is expressed in <i>E.coli</i> at 100µg/ml in 50mM Tris-Acetate, pH7.5, 1mM EDTA and 20% Glycerol.
Species	Mouse
Source	E.coli
Description	V-src Sarcoma viral oncogene homolog (avian). This proto-oncogene may play a role in the regulation of embryonic development and cell growth. The protein encoded by this gene is a tyrosine-protein kinase whose activity can be inhibited by phosphorylation by c-SRC kinase.
Application	1. ELISA 2. Inhibition Assays 3. Western Blotting.
Character	On SDS-PAGE comassie blue stained gel, the purified recombinant protein shows a band at 33 kDa.
Stability	Store vial at -20°C to -80°C. When stored at the recommended temperature, this protein is stable for 12 months.

GENE INFORMATION

Gene Name	Src Rous sarcoma oncogene [<i>Mus musculus</i>]
Synonyms	Src; Rous sarcoma oncogene; W259666; pp60c-src; neuronal proto-oncogene

 Tel: 1-631-559-9269 1-516-512-3133

 Email: info@creative-biomart.com  Fax: 1-631-938-8127

 45-1 Ramsey Road, Shirley, NY 11967, USA

tyrosine-protein kinase Src; p60-Src; OTTMUSP00000017316;
OTTMUSP00000019027; OTTMUSP00000019028; OTTMUSP00000019029; proto-
oncogene c-Src; EC 2.7.10.2

Gene ID [20779](#)

mRNA Refseq [NM_001025395](#)

Protein Refseq [NP_001020566](#)

UniProt ID [P05480](#)

**Chromosome
Location** 2 H1; 2 89.0 cM

Pathway Adherens junction; Endocytosis; ErbB signaling pathway; Focal adhesion; GnRH signaling pathway; VEGF signaling pathway

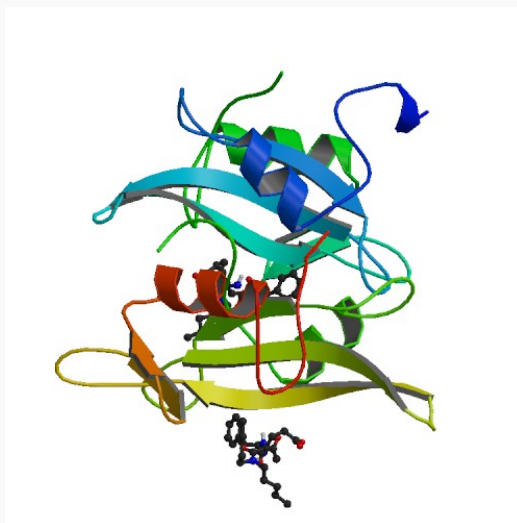
Function ATP binding; protein binding; kinase activity; non-membrane spanning protein tyrosine kinase activity; protein domain specific binding; protein C-terminus binding; protein tyrosine kinase activity; transferase activity

 Tel: 1-631-559-9269 1-516-512-3133

 Email: info@creative-biomart.com  Fax: 1-631-938-8127

 45-1 Ramsey Road, Shirley, NY 11967, USA

PDB rendering based
on 1a07.



 Tel: 1-631-559-9269 1-516-512-3133

 Email: info@creative-biomart.com  Fax: 1-631-938-8127

 45-1 Ramsey Road, Shirley, NY 11967, USA