

# Recombinant Mouse Rous Sarcoma Oncogene, SH3 Domain

Cat. No. Src-99M Lot. No. (See product label)

## SPECIFICATION

<b>Product Overview</b>	Recombinant Mouse Rous Sarcoma Oncogene protein expressed in <i>E.coli</i> contains SH3 domain and has a molecular mass of 33 kDa.
<b>Species</b>	Mouse
<b>Source</b>	E.coli
<b>Description</b>	V-src Sarcoma (Schmidt-Ruppin A-2) viral oncogene homolog (avian). A function for Src tyrosine kinases in normal cell growth was first demonstrated with the binding of family member p56lck to the cytoplasmic tail of the CD4 and CD8 co-receptors on T-cells. Src tyrosine kinases also transmit integrin-dependent signals central to cell movement and proliferation. Hallmarks of v-src induced transformation are rounding of the cell and the formation of actin rich podosomes on the basal surface of the cell. These structures are correlated with increased invasiveness, a process thought to be essential for metastasis.
<b>Formulation</b>	Recombinant Mouse Src SH3 domain protein at 100g/ml in 50mM Tris-Acetate, pH7.5, 1mM EDTA and 20% Glycerol.
<b>Application And Suggested Dilutions</b>	•ELISA •Inhibition Assays •Western Blotting.
<b>Characterization</b>	On SDS-PAGE comassie blue stained gel, the purified recombinant protein shows a band at 33 kDa.

 Tel: 1-631-559-9269 1-516-512-3133

 Email: [info@creative-biomart.com](mailto:info@creative-biomart.com)  Fax: 1-631-938-8127

 45-1 Ramsey Road, Shirley, NY 11967, USA

**Other Arians Available** UD DOMAIN, UD/SH3 DOMAIN, UD/SH3/SH2 DOMAIN.

**Storage & Stability** Store vial at -20°C to -80°C. When stored at the recommended temperature, this protein is stable for 12 months.

## GENE INFORMATION

**Gene Name** [Src Rous sarcoma oncogene \[ Mus musculus \]](#)

**Synonyms** Src ; Rous sarcoma oncogene; pp60c-src; AW259666

**Gene ID** [20779](#)

**mRNA Refseq** [NM\\_001025395](#)

**Protein Refseq** [NP\\_001020566](#)

**UniProt ID** [P05480](#)

**Chromosome Location** 2 89.0 cM

**Pathway** Adherens junction; Endocytosis; ErbB signaling pathway; Focal adhesion; Gap junction; GnRH signaling pathway; Tight junction; VEGF signaling pathway

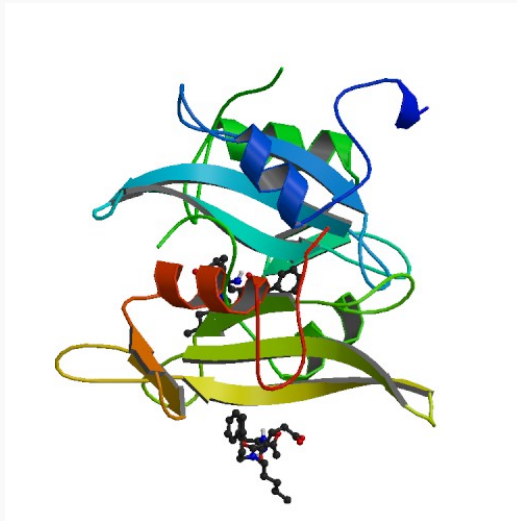
**Function** ATP binding; kinase activity; non-membrane spanning protein tyrosine kinase activity; nucleotide binding; protein binding; protein domain specific binding; protein kinase activity; protein tyrosine kinase activity; transferase activity

 Tel: 1-631-559-9269 1-516-512-3133

 Email: [info@creative-biomart.com](mailto:info@creative-biomart.com)  Fax: 1-631-938-8127

 45-1 Ramsey Road, Shirley, NY 11967, USA

PDB rendering based  
on 1a07.



 Tel: 1-631-559-9269 1-516-512-3133

 Email: [info@creative-biomart.com](mailto:info@creative-biomart.com)  Fax: 1-631-938-8127

 45-1 Ramsey Road, Shirley, NY 11967, USA