

Recombinant Mouse Stat2 protein, His & T7-tagged

Cat. No. Stat2-1809M Lot. No. (See product label)

SPECIFICATION

Product Overview	Recombinant Mouse Stat2 aa. (Asn658~Ala912 (Accession # Q9WVL2)) fused with N-terminal His & T7 tag was produced in E. coli cells.
Species	Mouse
Source	E.coli
ProteinLength	Asn658~Ala912
Form	Freeze-dried powder
Molecular Mass	Predicted Molecular Mass: 32.2kDa.
Endotoxin	<1.0EU per 1ug (determined by the LAL method)
Purity	>95%
Characteristic	The isoelectric point is 4.5.
Applications	SDS-PAGE; WB; ELISA; IP.
Stability	The thermal stability is described by the loss rate of the target protein. The loss rate was determined by accelerated thermal degradation test, that is, incubate the protein at 37°C for 48h, and no obvious degradation and precipitation were observed. (Referring from China Biological Products Standard, which was calculated by the

 Tel: 1-631-559-9269 1-516-512-3133

 Email: info@creative-biomart.com  Fax: 1-631-938-8127

 45-1 Ramsey Road, Shirley, NY 11967, USA

Arrhenius equation.) The loss of this protein is less than 5% within the expiration date under appropriate storage condition.

Storage

Avoid repeated freeze/thaw cycles. Store at 2-8°C for one month. Aliquot and store at -80°C for 12 months.

Storage Buffer

Supplied as lyophilized form in PBS, pH7.4, containing 5% sucrose, 0.01% sarcosyl.

Reconstitution

Reconstitute in sterile PBS, pH7.2-pH7.4.

GENE INFORMATION

Gene Name

Stat2 signal transducer and activator of transcription 2 [*Mus musculus* (house mouse)]

Official Symbol

Stat2

Synonyms

DROSHA; drosha ribonuclease III; RN3; ETOH12; RNASEN; RANSE3L; RNASE3L; HSA242976; ribonuclease 3; RNase III; drosha, double-stranded RNA-specific endoribonuclease; nuclear RNase III Drosha; p241; putative protein p241 which interacts with transcription factor Sp1; putative ribonuclease III; ribonuclease type III, nuclear

Gene ID

20847

mRNA Refseq

NM_019963.1

Protein Refseq

NP_064347.1

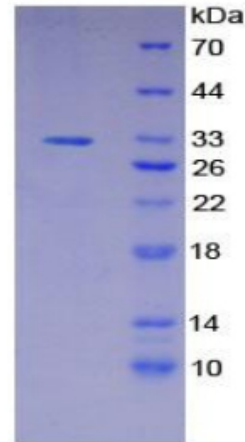
UniProt ID

Q9WVL2

 Tel: 1-631-559-9269 1-516-512-3133

 Email: info@creative-biomart.com  Fax: 1-631-938-8127

 45-1 Ramsey Road, Shirley, NY 11967, USA



15% SDS-PAGE

SDS-PAGE

 Tel: 1-631-559-9269 1-516-512-3133

 Email: info@creative-biomart.com  Fax: 1-631-938-8127

 45-1 Ramsey Road, Shirley, NY 11967, USA